

BACK TO RIDE IN LES 2 ALPES

Les 2 Alpes' ski area is open
from 27th Nov 2021
to 24th Apr 2022.
The glacier is open to
all this autumn from
23rd Oct to 7th Nov 2021.

(Subject to snow conditions and the public health situation)

HOME OF *Ride*



les  alpes
3600

EDITORIALS



Christophe AUBERT *Les 2 Alpes Mayor*

“Moving forward, and thinking beyond the public health crisis we’ve been experiencing for the past 3 seasons... More than ever before, the resort is in transformation mode. Regeneration, rethinking our tourist accommodation to satisfy new client needs, upgrading, getting unsold beds back on the market, standardising our entire offer and integrating green values into everything we do. Working hard to improve local services: electric shuttles, medical centre, recycling, and household waste sorting... All of this transformation is part of LES 2 ALPES’ evolution into a 4-season resort. To ensure businesses remain open year-round, we need to keep residents and local workers on site by taking decisive steps aimed at improving access to accommodation, so locals don’t have to leave for the valley or towns. At the same time, we need to develop attractive offers for popular mountain disciplines, such as cyclotourism, hiking, mountain biking/E-mountain biking, ziplining, aqua-fun areas... Diversifying our activities to win over visitors and continuing to forge loyalty... Much consideration has gone into resort access and greener forms of transportation; in time, these future facilities will create 4-season tourism appeal and improve day-to-day transportation, thereby helping to maintain the permanent population. We’re also working in unison with SATA 2 Alpes, the new ski area operator, to renew and develop Les 2 Alpes’ ski area. This winter will be “Back to Ride” in Les 2 Alpes.”



Fabrice BOUTET *SATA GROUP Director* *(Les 2 Alpes ski area)*

“2021/2022 marks our first real year of operation. SATA Group’s goal is to restore Les 2 Alpes to its former glory, in WINTER and SUMMER. This ambition translates into investment in the ski area, improving the quality of activities and most importantly, into a strategic customer-focused vision. We’re talking about a major investment of around 128 million euros over 5 years, with new flagship developments starting this year: the SUPERVENOSC gondola lift (1st stepping stone towards the Vallée Blanche sector), completing the improvements to the PIERRE GROSSE gondola lift (a recent innovation on the ski area from 2020) to increase transportation rates and safety, increasing LE DIABLE chairlift’s transportation rate and in 2022, turning it into a telemixte lift, as well as starting to prepare for the 3S (tri-cable) gondola lift,

in terms of technology and property development, as well as the first phase of landscaping the snow front, so that building work can begin in 2022.

This process starts with developing our ski area, but as devotees of Les 2 Alpes and its activities, we must also be equally dedicated to maintaining the resort’s high-quality in terms of preparation, fulfilment, information, and customer welcome.

As of summer 2021, and for the coming winter, this work continues to be carried out by our teams in close collaboration with the Tourist Office and the local council. It’s a real boost to have our three organisations moving towards, and motivated by, a common goal.

Les 2 Alpes is developing an approach shared by each of its respected stakeholders that fully integrates socio-professionals into the destination. SATA Group is strongly motivated and committed to embarking on the project of building the Les 2 Alpes of the future.”

LES 2 ALPES KEY INFO



3,600M

The highest ski area in France
(from a blue run)

Winter



Eric BOUCHET
Les 2 Alpes Tourist Office

BACK TO RIDE IN LES 2 ALPES. Head to Les 2 Alpes' summits on our ski lifts to get back to what really matters, and ski like never before! It's all ours – wide open spaces, the great white outdoors, the perfect winter playground, a relaxed but buzzing atmosphere (earnest but not overly serious!), get-togethers, a varied range of experiences and Les 2 Alpes' whole outlook, which is characterised by ambition, passion, respect and sharing.

“After such a difficult 2020 and 2021, it's time to look resolutely towards the future and demonstrate the mountains' resilience. In 2022, Les 2 Alpes will once again be offering wide open spaces, breath-taking landscapes, a chance to commune with nature and above all, the joys of snowsports. Snow is guaranteed to be on the programme thanks to the ski area's high altitude, with new equipment, new accommodation, and the ever-unique relationship between the resort's professionals and visitors. So, in 2022, it's Back to Ride in Les 2 Alpes!!”



1,2 MILLIONS

Overnight stays

(between 1 and 1.5 million overnight stays pre-Covid)

In 2021/COVID: 470,000 overnight stays (58% drop)



1,650M

Resort altitude

2-kilometre plateau providing easy access to ski runs and shops



1 MILLION

Ski days average sold

(between 900,000 and 1.2 million in pre-Covid winter seasons)



30,223

Tourist beds

In 2021/COVID = 41% of accommodation was closed



173 MILLION

Turnover generated/Winter

sports shops, ski schools, retail, restaurants, accommodation, ski lifts

4

Number of labels

Family Plus, Les 2 Alpes and Quality Tourism labels, and 2'Be Safe/ Covid)



TOP NATIONALITIES

Our 10 top markets are European

44 % — OF OUR CLIENTELE IS FROM OUTSIDE OF FRANCE (2019 AND 2020)



56%
France



19,3%
United Kingdom



7%
Belgium



5,9%
Netherlands



2,6%
Italy



1,7%
Danemark



1,1%
Poland



0,8%
Spain



0,7%
Switzerland



0,5%
Sweden

In 2021/COVID: 3.2% non-French visitors compared to 44% in N-1

N°1 = United Kingdom/2.3%,
N°2 = Spain/0.4%,
N°3 = Luxembourg/0.3%



BACK TO RIDE

A leading ski resort in the Isère department, Les 2 Alpes largely owes its international reputation to its high-altitude ski area (the highest in France) which allows skiing up to altitudes of 3,600 metres. The glacier guarantees skiing on natural snow in every season. The ski area boasts a continuous vertical drop of 2,300 metres between 3,600 metres and 1,300 metres (including 10 kilometres on a blue run between 3,600 metres and 1,600 metres). The higher you climb, the more accessible the runs become for intermediate skiers. It's a ski-in/ski-out resort, and whether you're in a couple, with family or friends, a beginner, intermediate or expert, you can all get around together on parallel ski runs and meet up easily, and best of all, the terrain is highly varied (marked runs, off-piste, fun runs, slalom stadium...). Winter 2022 will be "BACK TO RIDE" in Les 2 Alpes! Head to Les 2 Alpes' summits to get back to what really matters, ski like never before and once again enjoy snowsports thrills, nature and wide-open spaces!



LES 2 ALPES SKI AREA OPENING

AUTOMN

(October half-term holiday):
from 23rd October to 7th November 2021 /
To all, from 12th October to 10th November 2021
Subject to snow and safety conditions and the public health situation.
First snow and the first skiing of the winter!

WINTER

from 27th November 2021 to 24th April 2022



LES 2 ALPES SKI AREA IN FIGURES



200

Kilometres of runs

70% of the ski area is above
2,000 metres



18

Piste groomers

working all year round



3,600

Top of the ski area



60

Hectares of artificial snow

250 snowmakers / 15% of the ski area



2,300 M

Vertical drop

(in metres) without taking
a single ski lift



5

**Free ski lifts at
the bottom of the slopes**



44

Ski lifts

18 button lifts, 16 chairlifts,
6 gondola lifts, 1 funicular lift,
1 ski tow, 1 magic carpet,
1 inclined lift



EQUIPMENT

▶ **1 freestyle area**

(2 Alpes Freestyle Land on
La Toura sector at 2,600 metres),

▶ **1 kids' park,**

▶ **1 timed parallel
slalom video zone,**

▶ **1 photo jump,**

▶ **1 DVA park,**

▶ **3 slalom stadiums,**

▶ **1 KL speed skiing zone,**

▶ **1 viewing platform,**

▶ **1 ice cave, "selfie" areas,**

▶ **7 slopeside restaurants**

▶ **5 slopeside bars.**



96

Ski runs

2 black, 20 red, 50 blue
and 14 green



10 000

**People = average daily
visitor numbers**

SKIPASS PRICES WINTER 2021/2022

SKIPASS PRICES

23rd Oct. to 7th Nov. 2021

Standard SKIpass: 36.50€ - Jandri Express (access to the glacier) open from 7.30am to 4pm

Standard MTBpass: 20€ /

Standard pedestrian pass: 15€

/ Access to the Jandri Express, Venosc and Mont de Lans

SKIPASS PRICES

27th Nov. to 17th Dec. 2021

- Adult/Senior Citizen 1-day pass

= 43.50€ / Child 1-day pass = 39.50€

- Adulte/ Senior Citizen 6-day pass

= 243€ / Child 6-day pass = 214.50€

SKIPASS PRICES

8th Dec. 2021 to 24th April 2022

- Adult 1-day pass = 54€ / Child

1-day pass = 43.50€ / Senior Citizen

1-day pass (+65) = 50.50€ - Adult

6-day pass = 270.50€ /

Child 6-day pass = 216€ / Senior

Citizen 1-day pass (+65) = 252.50€

Actually, health passes are not required on SKI LIFTS, but face coverings must be worn (though not on ski runs, that's up to you!). Hand-sanitising gel is available, queues are regulated, directions move guests safely around the resort, with respect for social distancing...





OUR NATURE A PROTECTED GLACIER FOR OVER 20 YEARS!

The resort has always cared deeply about its snow quality, its skiability and its glacier. Preservation work is carried out on a daily basis, all year round by Les 2 Alpes' ski area company (Sata 2 Alpes). The glacier, formed by layers of snow, is dome-shaped and enjoys a gentle gradient that helps with its preservation: the sun's rays disperse over a larger surface area than they would on a steeper slope. Additionally, its North-East exposition is perfect! Before preservation measures were put in place, analysis was carried out to measure changes in the glacier and its snow.

Today, piste groomers are equipped with GPS and radars capable of measuring the snow levels against a benchmark established at the beginning of the season. These very precise measurements are used to make statistical calculations that show the impact of visitor numbers on the glacier, the level of melting ice, as well as the effects of steps such as artificial snow and piste grooming. The snow engineer and their team organise the snowmakers (and water usage), day-to-day piste grooming, the installation of snow barriers (wooden structures that trap snow),

snow pipes (half pipes dug into the snow to trap it) and tarpaulin covers to slow down the rate of melting and help the glacier reform every season!

As an act of modern alchemy, these snow professionals are going to use melted snow to repair the ice, and use detachable snow cannons.

Like all of the world's glaciers, ours is melting, but less quickly thanks to its geographical profile: a (non-hanging) ice cap, daily maintenance by professionals, but also and above all the fact that skiing on it and grooming it increase the snow's mechanical resistance (helping to preserve the snow and ice regeneration).





THE RIDE EXPERIENCE

By **Xavier SILLON**,
Les 2 Alpes French Ski School Director



Les 2 Alpes' 250 ESF French Ski School instructors are ready, waiting and raring to go for the "BACK TO RIDE" season

Les 2 Alpes' ESF French Ski School instructors have ants in their ski pants! They're waiting to share amazing thrills with you, whether you're looking for an adrenalin rush or some peaceful contemplation. Skiing, snowboarding, in a group or independently, we have the solution for you.

Group or individual lessons for all abilities, in all disciplines: skiing, snowboarding and even monoskiing, available throughout the winter season and even in summer too!

Les 2 Alpes ESF French Ski School also includes the 'Montagne Expérience' with a range of services:

- Have a great time together with the "alternative, fun ride" Family Olympiad.
- Come and challenge your friends with the "ride challenge" Olympiad for friends.

- Easy snowshoeing sessions including delicious refreshments. These services run throughout the season, depending on snow conditions and availability, in the afternoons or evenings.

Les 2 Alpes' summits can also be ridden without using the ski lifts. Get your touring skis out for a challenging or peaceful ride. Instructors will bring back all the old thrills on a playground that will delight even the sportiest visitors, such as trail runners, as well as beginners. Highly demanding sports challenges or sessions at a slower, more contemplative pace.

Pre-booking is advised, either by telephone on +33 (0)4 76 79 21 21 or on the esf2alpes.com website.

Les 2 Alpes means RIDE from altitudes of 3,600 to 1,300 metres, the perfect way to wake up your ski tips after far too long a wait. Everyone has their own style, straight down the slope or an uncomplicated snowplough... Back country, piste, snowpark, split, ski touring...it's a stunning playground to satisfy every need. Enjoy to your heart's content. Snowsports joy!

FUN ON THE SLOPES

Skiing is already a fun sports activity, and now the resort is creating more and more fun areas to enrich the RIDE experience.

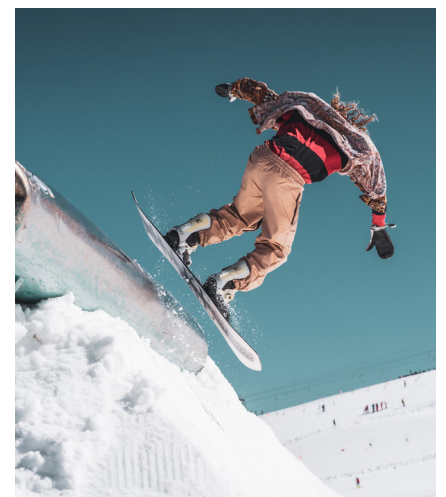
- From 3,400 metres back down to resort, «**SKI TRANQUILLE, SLOW ZONE**» signs denote an area dedicated to peaceful snowsports, where moderate speed and respectful behaviour are the watchwords.

- With special lanes for intermediate skiers, ski patrollers make sure that the rules are adhered to.

- Freestyle is part of Les 2 Alpes' DNA, with a Freestyle area available for everyone: **2 ALPES FREESTYLE LAND**. Sylvain Garabos is the man in charge, and with his team of shapers, he redesigns each of the snowpark's zones, much to the delight of experts, pros and beginners, creating more accessible fun areas! The zone is largely located on La Toura sector at an altitude of 2,600 metres (family park and boardercross, easy park, slopestyle, big air, park avenue, moguls...). 60 modules: rails, kickers, quarters, hips...

- **A KIDS' PARK FOR THE UNDER 10s...** The under 10s have got their very own freestyle area too! The KIDS PARK is a safe child-sized freestyle area (located on LES CRÊTES sector at 2,100 metres), with a ski lift, moguls and banked turns to learn how to perform jumps.

- **JUMP, PARALLEL SLALOM AND SPEED SKIING ZONES** on the slopes. Families and friends can have fun competing in a timed slalom, a jump, or a speed skiing descent, and, as a bonus, can take home photos of their exploits, saved onto their skipass! ils repartent avec les images de leurs exploits, gravées dans leur skipass !



THE FREERIDE DIMENSION ACCORDING TO ÉRIC PEREIRA, HIGH MOUNTAIN GUIDE



«Freeride is a well-kept secret in Les 2 Alpes. The itineraries are inconspicuous and often impressive in scale. Despite the secrecy, there's incredible potential here. It's La Grave's lesser-known counterpart. Freeride itineraries unfurl to the south and the north, ranging from easy to very difficult, and extend between altitudes of 3,560 metres and 1,400 metres, with a total vertical drop of over 2,000 metres. They're not very busy and it sometimes takes a few mountaineering techniques to reach them. The ski descent on the south side, to Saint-Christophe-en-Oisans, is much more than just a downhill run. It's a journey through time. It's an expedition to the Haut-Vénéon's mountain villages. The ski descent to the north, to Château Borel, is a winter race through the high mountains. You'll find the snow powdery and the atmosphere stark. Everyone will be able to find an itinerary to suit their ability and preferences. As with all off-piste activities, you're required to take certain safety equipment with you (avalanche beacon, shovel, probe). www.guides2alpes.com

MEET THE PROS ON THE SLOPES

- Over the course of winter 2021, the SATA 2 ALPES ski area company will run **WORKSHOPS RELATED TO MOUNTAIN PROFESSIONS**. Workshops on avalanche prevention and DVA (avalanche victim detector) usage, avalanche rescue dog demonstrations, nivology (understanding snow, how to preserve and maintain it), piste grooming... Educational and fun collaborative events.

- Every Wednesday at 8am, Les 2 Alpes **ski patrollers invite holidaymakers to learn all about the work they do**: workplaces, daily responsibilities, making the ski runs safe, keeping visitors informed, rescue, dog-handling, avalanche blasting, opening the ski runs... **FIRST TRACKS SKIING** is a privilege to share in the early hours of the morning!

- At the start of every season, the National Association for the Study of Snow and Avalanches (ANENA) runs **AVALANCHE BLASTER TRAINING** (25th Oct to 26th Nov / one hundred participants) and **AVALANCHE RESCUE DOG HANDLERS** (6th to 17th Dec / twenty participants) on Les 2 Alpes' summits. At the end of the training, every ski patroller receives a state-recognised certificate... A chance to see behind the scenes of the ski resorts' world of work!





LES 2 ALPES WHAT'S NEW

SKI AREA LES 2 ALPES SATA

New ski lift operator SATA 2 ALPES is launching new projects from winter 2022 onwards to modernise and develop Les 2 Alpes' ski area. This is its 1st winter managing Les 2 Alpes' ski area! The pandemic hasn't helped with the progress of some projects, but significant investments have nonetheless been made: SATA 2 Alpes plans to invest 150 million euros over the next 3 years. It's planning to rearrange and redesign Les 2 Alpes' ski area to improve the flow of skiers with more modern ski lifts offering higher transportation rates, while maintaining the ski area's coherence to offer customers a continually improving ski offer.

WINTER 2021/2022

New Super Venosc gondola lift on the Vallée Blanche sector, enabling easy ski-in/ski-out access for guests of the Alpe de Venosc Residence (Les Clarines, Le Flocon d'Or, Les Écrins and more), as well as faster access to the "Glacier 3600" mountainside runs.

WINTER 2021/2022

The new Pierre Grosse gondola lift (La Fée sector between 2,100 and 3,100 metres), which was up and running in January 2020, will be serviced as part of the creation of the new Pierre Grosse (1) blue run it serves. This new run will delight experts and intermediates by

offering easier access to the Col des Gours and by making steep zones safer.

- Construction will begin on the new 3S tri-cable gondola lift (in 2022, and which should conclude by 2024)

to replace the Jandri Express gondola lift (central access). This new more comfortable gondola lift will be more reliable in varying weather conditions and will be able to take customers between the resort and the glacier (3,200 metres), with a mid-station at Les Crêtes (2,100 metres), a stop at 2,600 metres, and then another gondola lift between 2,600 metres and 3,200 metres. It will be able to transport 3 times as many people as the Jandri lift; a total of around 4,000 people an hour compared to 1,200 today!





ACCOMMODATION



The **BELAMBRA** holiday club is being extended and will redefine the upper part of Les 2 Alpes' Village 1800 sector. The whole community and its economy is being redesigned. Village 1800 was built in the 1980s on the site of Les 2 Alpes' former aerodrome. For many years, it's been beloved by customers and families who enjoy its exceptional views, and what was at the time an innovative concept: car-free winter sports holidays. This winter, we'll be able to reconnect with that concept, which is very in keeping with sustainable development and the environment. Reopening in December 2021! Further information is available from 2 ALPES RESERVATION (Tourist Office accommodation bookings): www.reservation.les2alpes.com or www.belambra.fr/club-vacances-les-2-alpes

The former Champions hotel is changing hands and identities to become the **BASE CAMP LODGE**. The hotel has been completely renovated and comprises 30 rooms, ranging from shared rooms (max. 10 people) to double/twin rooms, to master suites and 40m² family suites. The style and décor are mountain-themed, designer and very pared back, with wood, metal and a trapper feel! It's rounded off by a restaurant (vegan, vegetarian, mountain cuisine, meat...), fitness room, sauna, ski room and conference room (meetings, business centre). From 95€ per night in a room shared by 2 people, and from 35€ per person per night in the shared dormitories. Opening is planned for the 10th of December 2021! Further information available on +33 (0)4 79 31 18 64 / www.hotel-basecamlodge.com

NEW MMV LES CLARINES 4-STAR RESIDENCE CLUB opening in December 2021, located on the same level as the new Super Venosc ski lift (Vallée Blanche Sector). 158 apartments, from 4-person 1-bedroom to 10-person 4-bedroom apartments, between 32m² and 91m². The apartments are fully equipped with all mod cons (elegant, fashionable décor) with the following services included: dedicated parking space, early check-in, welcome basket, heated indoor/outdoor swimming pool, well-being and spa area, activity rooms, childcare for 4 to 15-year-olds (Children's Team), ski shop and heated ski room, towels provided, end-of-stay cleaning, cleaning kit, Wi-Fi... with optional extras: bakery service, breakfast

service, food shopping delivery, catering delivery... From 1,000€ per week / www.mmv.fr/contacts

FROM SUMMER 2021, opening of the Neige & Soleil residence/hotel (Terrésens): 34 apartments ranging from studios to 5-bedrooms (221 beds) and the SAFILAF Néméa tourist residence: 104, 4-star accommodation options and 91, 4-star Premium accommodation options (931 beds). As well as the construction of 3 prestige chalets:

The BLACK COMB chalet, located next to the Combe Noire run (from which it takes its name) opposite La Muzelle, offering large bay windows with unique views of La Muzelle and the Écrins National Park. The owner designed the chalet as he would have wanted it himself - it's the chalet of his dreams! The mountain-inspired exterior and interior materials are of the best possible quality, and the chalet facilities include an indoor swimming pool, outdoor Jacuzzi, cinema room, sauna, snooker table, massage room... An exceptional chalet, perfect for a large family group! www.chalets-combs.com/chalets

The **ATELIER** is a contemporary, industrial style 260m² chalet. Spacious and elegant (high quality materials: wood, stone, glass and steel), the chalet is spread over 3 floors and can accommodate 14 people to a very high standard, including a 3-car garage, heated ski area, spa area (Jacuzzi and sauna), fireplace, generously sized rooms, a loft equipped as a relaxation area, bedrooms each with their own bathroom and toilet and an impressive suspended steel walkway which overlooks the rest of the chalet. www.chalet-atelier2alpes.com/

At the heart of Mont de Lans village, "**CHALET LE PETIT BES**" is an artistic, welcoming creation! It is connected to the ski area via a chairlift (10 minutes, ski-in/ski-out) or 4 kilometres away by car. Those seeking tranquillity and yesteryear charm will be delighted by its authenticity, high quality materials (wood, velvet, zinc, slate...), elegant mountain-style decor and exceptional facilities! Local artist Sophie Dode has also added an artistic touch with several large-scale paintings... www.facebook.com/chaletlepetitbes



ESTABLISHMENTS



CHEZ NOUS 2 LES 2 ALPES

is a new bar run by the ever-enthusiastic Ophélie & Sophie, who are always in a great mood and give their customers 200%! It's a tapas bar where you can enjoy local platters and specialties from the south-west of France to your heart's content... Boasting a fantastic atmosphere, it's cosy, friendly, jovial, family-friendly, spacious, and located on Les 2 Alpes' Place de Venosc. www.facebook.com/Chez-nous-2-12a-102726505327060/

A new bar & restaurant and perhaps Les 2 Alpes' new Tex-Mex landmark: **LAS ROSAS**, on the Place de Venosc (pedestrianised zone with a children's play area... The perfect spot for families!). Open from Tuesday to Sunday from 3pm to 11pm serving cocktails, tapas-style aperitifs, and Mexican meals! Somewhere to raise a toast, dine, share, and have a great time! <https://las-rosas.fr/>

Le Diable au Cœur, a slopeside restaurant accessible to skiers and pedestrians, bears the "ÉCOTABLE" label, an eco-responsible label which guarantees that the restaurateur has sourced ingredients from markets and local suppliers, and above all, that the ingredients they buy, and cook are French. With around ten different criteria required to obtain the label, one of them is a commitment to zero waste. It was awarded to Le Diable au Cœur bistronomic restaurant in 2021... It's an unmissable establishment which has always promoted Oisans producers in its dishes! From this summer, there's also new gastronomic establishment: La Table d'Emma! www.lediableaucoeur.com/fr/

SAMPLE A WINE AGED AT AN ALTITUDE OF 3,200 METRES:

The Durand brothers (Le Refuge des Glaciers restaurant at 3,200 metres) and Jordi Bouillard have been experimenting with ageing

wine in casks stored at a very high altitude. On the 19th of June 2021, the whole team joined forces with wine producer Stéphane Kandler, who runs the Château Tourril vineyard, to bottle 303 bottles of Minervois, and a Languedoc AOP (red) at an altitude of 3,200 metres (Les 2 Alpes glacier). Last autumn, they came up with the idea of taking a 125-litre cask up the glacier to gently age it in the cellar of Le Refuges des Glaciers at 3,200 metres... It's been confirmed from past experiments that wine ages much more slowly at high altitude. Wine producers and sommeliers are unanimous: the higher up the wine is kept, the slower it matures. This autumn 2021 (October half term), we'll have the verdict. A tasting session will show whether or not it was a good idea! If it is a success, the experiment will continue in winters to come. It's worth noting that this first "Sérac" 2021 high-altitude vintage could be auctioned off... This winter, guests will be able to taste high-altitude wine!

LES 2 ALPES MEDICAL CENTRE:

Open all year round, amongst other services, it will provide mountain and emergency medicine training. This new medical centre will be spread over 2 resort locations:

- **LA RESTANQUE** Residence (resort entrance), on the ground floor, the North premises housing a GP surgery, traumatology unit and emergency medicine, and the South premises housing 3 dentists (year-round) and a GP surgery.

- **LE DIAMANT** Residence (resort centre), comprising a Santé2Alpes meeting room, and consulting rooms for medical and paramedical professionals.



ACTIVITIES



1- For a hike off the beaten track, head for either the **“PHILO” or “APÉRO” SNOWSHOE HIKE**. The latter will start running from the 2022 February school holidays, and participants will be able to discover the joys of snowshoeing, combined with local delicacies and a great atmosphere! Les 2 Alpes Mountain Guides Office
www.guides2alpes.com



2 – Once a week during the school holidays, Les 2 Alpes Tourist Office will once again be offering the **GOURMET HIKE**, which was launched during the Covid lockdown (winter 2021). It's an unaccompanied hike, on snowshoes, with gourmet delights along the way. A fantastic opportunity to combine the joys of the mountains with culinary specialities! The new hike will vary from the 2021 version and all the information will soon be available on www.les2alpes.com



3 – The CHAMOIS LODGE hotel is creating a new relaxation area: **LE SPA BY CHAMOIS LODGE**. Fabien and Aurélie Poirot renovated the hotel 2 years ago and haven't stopped adding new developments every season since. For winter 2022, guests will be able to relax in the sauna, Jacuzzi, steam room, under sensory experience showers, in the expert hands of massage specialists...



4 – **5,500 metres of vertical climb on touring skis** – A tantalising new 5-day challenge for athletes involves climbing the Oisans region's snow-covered slopes on touring skis. And to be properly prepared for these sessions: off-piste practice, discovering or improving your safety equipment skills (DVA avalanche beacon, shovel, probe) and learning all about weather conditions and how to master the snowy mantle. A fantastic programme for athletes looking for a different way to experience the mountains. Les 2 Alpes ESF French Ski School - www.esf2alpes.com



LES 2 ALPES IS COMMITTED



1 – Les 2 Alpes is applying to obtain the **FLOCON VERT LABEL**, created by the MOUNTAIN RIDERS association (since 2001 and official since 2011). Today, only 8 ski resorts hold the title, and 19 including Les 2 Alpes wish to join them as a response to the climate and tourism emergencies, to meet our customers' future mountain holiday needs.



2 - LES 2 ALPES, THE 1ST RESORT TO RECYCLE DISPOSABLE MASKS!

Les 2 Alpes is one of the first French ski resorts to implement recycling measures to collect and recycle disposable face masks. Les 2 Alpes townhall, Venosc and Mont de Lans villages, Les 2 Alpes Tourist Office, the top of the Jandri Express gondola lift, and select businesses and organisations each have a box with a secure locking system which conforms to health and safety standards. The collected masks are then sent to an industrial recycling unit: VERSOO. Once

separated and cleaned, the disposable masks are ground into grains of plastic and used to make new polypropylene objects.

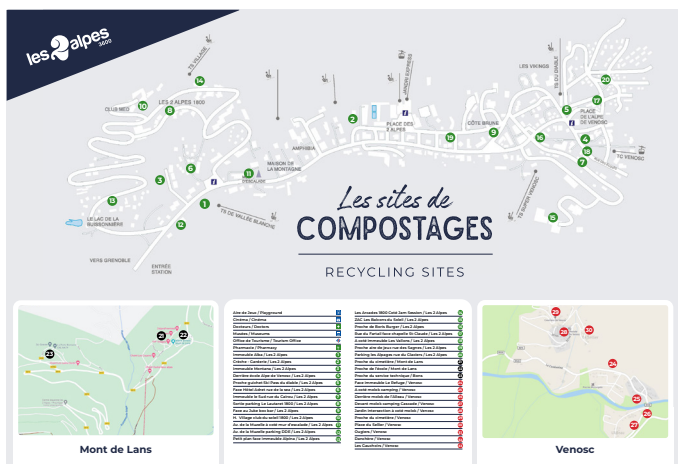


3 – Les 2 Alpes is equipped with 100% **ELECTRIC INTRA-RESORT BUSES!** A ski resort 1st to lower carbon emissions.

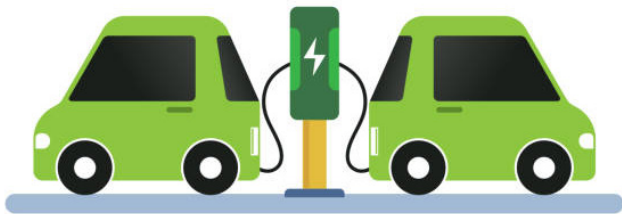
4 – Les 2 Alpes, with the help of the Communauté de Commune de l'Oisans and driven by the "Eco Projet" group, has introduced 33 composting sites (20 on the plateau of Les 2 Alpes, and 13 dotted between Venosc and Mont de Lans villages), which can be located on the Les 2 Alpes app.



5 – Every year, the resort installs **ELECTRIC CHARGING POINTS** to cater to customers with electric cars. The system was introduced by the Eborn network in Isère. These charging points are fed by 100% green electricity produced from renewable energy sources (EKOénergie label). There are 3 payment options: subscriber badge, contactless bank card and online smartphone payment. With a single subscriber badge, you can access all the charging facilities available on the network, including those in other French mainland departments: Morbihan, Saône-et-Loire, Yonne, Var... (List available from www.eborn.fr).



6 – For winter 2022, **Les 2 Alpes ESF French Ski School** will be using the same price list as in 2021, partly as a treat for customers, but mostly to avoid waste by having to reprint unused brochures from the previous year.





LES 2 ALPES EVENTS 2021-2022

(Subject to change and/or cancellation)



25th October to 26th november

AVALANCHE BLASTER TRAINING

3RD ÉDITION

The National Association for the Study of Snow and Avalanches (A.N.E.N.A.) is running mountain avalanche blaster and delay charge blaster training sessions in Les 2 Alpes. Around one hundred avalanche blast technicians will be trained in Les 2 Alpes for the 3rd consecutive year!

21st to 31st December

END OF YEAR CELEBRATIONS

End of year celebrations: Festivities, decorations, atmosphere, Magic Avenue parades, fireworks, torchlit descents...

8th to 9th January

MARION ROLLAND TOUT SCHUSS CUP

6TH ÉDITION

Speed skiing competitions for kids (<12 years) with an incredible sponsor: Marion Rolland (2013 world downhill champion).

6th to 17th December

AVALANCHE DOG HANDLER TRAINING

16TH ÉDITION

ANENA is running avalanche dog-handler training from the 6th to the 17th of December 2021. Around twenty pairs will follow 88 hours of practical and theory lessons over 11 days.

22nd January

LES 2 ALPES NIGHT SNOW TRAIL

9TH ÉDITION

Nighttime trail running event in the snow! A highly popular annual event! (+ 500 participants every time). Participants experience an unusual, extraordinary evening, racing above Les 2 Alpes at night, and taking in the stunning views! Instead of running down snow-covered slopes, climb them by the light of the moon... 5, 10, 15 or 20 kilometres, take your pick!

11th to 17th December

RISE FESTIVAL (GB)

7TH ÉDITION

A fantastic week enjoying an electro-music festival and the joys of the mountains, run by the British ski tour operator, Wasteland (6,800 attendees).



12th to 14th March

KIDS NATIONAL TOUR

The Kids National tour is a leg of the national snowboarding circuit (boardercross) for children, run by Les 2 Alpes' ski club.

2nd to 4th April

FRENCH SNOWBOARDING CHAMPIONSHIPS

(Slopestyle and Big Air)



9th april

LA PATROLETTE 2RD ÉDITION

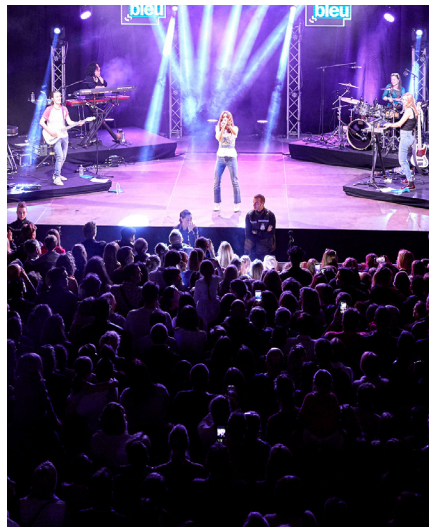
Ski patrollers (SATA 2 Alpes) will be showcasing their line of work and challenging each other with a climbing race, a timed avalanche rescue and a sled boardercross. Fun, laughter and challenges at this extraordinary get-together!

11th to 15th April

FRANCE BLEU LIVE FESTIVAL LES 2 ALPES

2ND ÉDITION

France Bleu and Les 2 Alpes join forces to organise a music festival with some of the biggest names in the French music industry.



17th to 18th April

MICRO KIDS 5^{ÈME} ÉDITION

Les 2 Alpes ESF French Ski School and Les 2 Alpes ski club are running a French snowboarding competition (giant slalom on a boarder cross) for kids between the age of 5 and 11 (divided into 'super microbes', 'microbes' and 'poussins'). The champions of the future could well be there...

19th april

TROPHÉE DES CHOUCAS KIDS

ski & snowboard FFS competitions for the kids aged from 7 to 11.

18th to 24th April

SNOW 2 BIKE WEEK

2ND ÉDITION

SNOW 2 BIKE WEEK takes place in Les 2 Alpes' last week of the season and combines socialising with ski and mountain biking competitions! The SNOW 2 BIKE weekend is for teams of two, with the duo skiing together from 3,400 metres to the resort at 1,600 metres, then swapping to a mountain biking section down the legendary Venosc trail. There's only one goal, to have fun, have a great time with your partner and and cross the finish line together. Fun "RIDE" first and foremost, the season's last ski run and first mountain biking or E-mountain biking run !

FOREIGN EVENTS

27th Nov. to 4th Dec.

POWDERWEEK (GERMANY)

German snowsports week run by tour operator Snowtrex (500 attendees).

22nd to 29th January

SNOWATTACK (HUNGARY)

snow week run by tour operator Siutak (2,000 customers).

29th to 4th February

BATH SNOWSPORTS (GB)

music & ski week organised by Wasteland Ski.

12th to 18th March

SNOWSHOW (POLAND)

music & ski week.

19th to 25th March

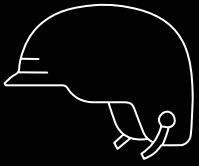
SNOWFEST (ROMANIA)

fun week with music and snowsports run by tour operator Sfara Tours (3,000 attendees).

26th to 1st APRIL

EXETER SNOWSPORTS (GB)

music & ski week organised by Wasteland Ski.



LES 2 ALPES ACTIVITIES

Even if skiing's your thing, there's no shortage of activities in Les 2 Alpes. As a twosome, with your family, or with friends, you'll be spoilt for choice!



COUPLES / TWOSOMES

► A SUNSET SKI SESSION

The concept has been revived by the team at "Le Refuge des Glaciers", Les 2 Alpes' slopeside glacier restaurant. Nights of snowsports, sharing and socialising! The evening involves skiing on Les 2 Alpes glacier, enjoying a traditional meal and an incredible night-time descent from the glacier to the resort, totalling a 1,600-metre altitude difference... It's a unique exhilarating, fun and very special evening! The Sunset Party by Le Refuge 3200 takes place during school holidays (once a week). Restaurant Refuge des Glaciers / www.2alpesdecouverte.fr

► GET AWAY FROM IT ALL ABOVE THE VOID AT THE ÉCRINS VIEWING PLATFORM AT AN ALTITUDE

At an altitude of 3,400 metres and accessible to both skiers and non-skiers, the Ecrins viewing platform boasts unique panoramic views... Make your way along the 7-metre long step into the void overlooking La Selle valley 1,500 metres below: a magical moment where time simply stops... Far from the crowds and at one with nature, this viewing point offers one of Les 2 Alpes' prettiest views! www.les2alpes.com



► THE TEMPTATION OF FLIGHT,

embark on a paragliding first flight with an instructor, between 2,400 metres (top of the Le Diable chair lift) and the resort at 1,600 metres, overlooking the Ecrins National Park and the resort. Soak up the amazing views! www.les2alpes.com

► YOGA, BEFORE AND AFTER SKIING

Maria José Rocuant is a specialist Ashtanga yoga teacher for locals and holidaymakers. To warm your muscles up before skiing, she offers a "high-altitude warm-up": an early morning yoga session to gently awaken your body outside followed by breakfast/brunch (once a week). Or post-skiing, from 5pm, there's "After yoga and tea", a yoga session aimed at recuperation, on yoga mats in the snow, on Les Perrons sector opposite the Rocher de la Muzelle (once a week). www.les2alpes.com



FAMILIES / GROUPS

► A SNOWSHOE HIKE IN SEARCH OF CHAMOIS MOUNTAIN GOATS

Set off on snowshoes (age 7 and over) to see Chamois mountain goats, organised by the mountain guides office (mountain leaders). What could be more wonderful than seeing mountain goats up close – such emblems of the mountain environment. This easy Chamois discovery snowshoe hike lasts 2 ½ hours (100-metre altitude difference). The session is part of the "National Park Spirit" walks run by the French national parks. Les 2 Alpes Mountain Guides Office - www.guides2alpes.com



► **«DONUTS» or RUBBER RING TOBOGGAN**

Every afternoon between 3pm and 6pm, launch yourself into the air, on your own or on a double ring... jump on a donut-style toboggan over a ramp into the air... And land onto a big air crash mat (10mX15m) ...
www.event2fly.com

► **AUTHENTICITY IN VENOSC VILLAGE**

Nestled in the Vénéon Valley at an altitude of 900 metres, the little picturesque village of Venosc is made up of several hamlets. This little cocoon is a refuge for artists who happily open the doors to their studios or invite visitors to come and tour their shops, stocked with gourmet products and unique little objects. Venosc offers visitors calm, charm and the authenticity of a real mountain village, at the entrance to the Ecrins National Park. Just 8 minutes away from the international resort of Les 2 Alpes via gondola lift, the village is the perfect destination for holidaymakers seeking to recharge their batteries after enjoying the buzz of a world-renowned resort. www.les2alpes.com

► **INTRODUCTION TO RUISSILING...**

organised by the mountain guides office, ruisseiling consists of climbing frozen streams using ropes and crampons. Les 2 Alpes mountain guides office - www.guides2alpes.com



FOR THE YOUNG
AT HEART

► **GET AWAY FROM IT ALL ON AN ELECTRIC MOUNTAIN BIKE ON SNOW!**

A specialist and pioneer in guided sessions and electrically assisted MTB breaks in Les 2 Alpes, Aventure Electrobike is the expert in the subject in all seasons. Electrically assisted mountain biking gives you the chance to experience a different side to the resort, with your bike tyres in the snow, while enjoying new snowsports and cycling thrills. It's original and physical, with a 400-metre vertical climb for more experienced cyclists. You can also take part in night-time rides including an evening meal on the summits.

In winter, E-MTBs, equipped with studded tyres, are accessible to everybody, beginners included. Les 2 Alpes' playground lends itself to gentle and demanding itineraries. Aventure Electrobike
www.aventure-electrobike.com



► **SKI TOURING**

Les 2 Alpes has 3 marked ski touring routes: one on Les Vallons du Diable side, one starting from the Super Venosc chairlift (Vallée Blanche sector) and another starting out from the Vallée Blanche chairlift. The mountain guides office has also devised original and unforgettable beginner's ski touring sessions beneath the stars; climb up the slopes to the light of your head lamp – an adventure not to be missed in Les 2 Alpes! Several sessions of varying ability levels are available, and you can even picnic or enjoy dinner in a slopeside location, before skiing quietly back down to resort. Les 2 Alpes mountain guides office - www.guides2alpes.com

► **TRY OUT A SKI RUN DESCENT ON A SNOWSCOOT**

Fans of new snowsports experiences and adrenalin will love the snowscoot - a combination of a bike and a snowboard! The Saint Christophe ESI ski school in Les 2 Alpes organises 90-minute guided sessions over green and blue runs. Snowscoot users can take the blue Jandri run from 3,200 metres back to the resort at 1,600 metres ... giving you chance to master the technique and experience guaranteed thrills!

► **ADRENALIN WITH SPEED RIDING**

A different sensation to paragliding, it's even more adrenalin-fuelled! Speedriding is a combination of freestyle paragliding, freeride, snowkiting and parachuting... Beneath a slightly shorter wing than a paraglider, riders glide down the slope with an instructor. The aim is to tease the powder snow just above the ground, not gaining too much height, going up in the air and back down onto the slope – "touch and go", flying and skiing at the same time, pushed downhill by the wind, creating a similar effect to a snowkite (except a snowkite goes uphill)... Good level of skiing required!www.air2alpes.com



► **OTHER ACTIVITIES**

Snowshoeing hikes, ice climbing, dog-sledding, snowmobiling, helicopter flights, swimming pools, ice rink, spas, massages, yoga, squash, tobogganing areas, ice cave, laser game, explorer's hike (discovery route for the whole family), babysnow (a snowsports device for the under 4s), indoor climbing, bowling, cinema, Palais des Sports and events (indoor sport, concerts and shows), Tourist Office-run entertainment... Relax and/or dance on a slopeside terrace from 3pm: PANO BAR (2,600 metres), ROTONDE (2,400 metres), PATACHON (2,100 metres), BIVOUAC (1,600 metres) and UMBRELLA (1,600 metres) and then keep the fun going in the resort's many bars and lounges (around thirty)... A relaxed, musical, cultural, local and festive atmosphere throughout the season! station !



LES 2 ALPES HIGHLIGHTS

- ▶ High summits and **SNOW GUARANTEE!**
- ▶ 2,300 metres of **vertical drop** without taking a single ski lift
- ▶ The higher up you go, the easier the ski runs, and the more suitable for intermediate and beginner skiers.
- ▶ **10 kilometres of blue runs** between 3,200 metres (foot of the glacier) and 1,600 metres (resort).
- ▶ 5 ski lifts **FREE OF CHARGE** at the bottom of the slopes.
- ▶ Pedestrians can reach altitudes of 3,400 metres, it's **INCREDIBLE!**
- ▶ **Nature from multiple perspectives:** Les 2 Alpes may be a dynamic, international skiing destination but you can take it easy on your holiday too! The resort offers the chance to enjoy a 'slow tourism' approach to the mountains via its many viewpoints. On skis, on foot (pedestrian access to every level via the ski lifts), ski touring, snowshoeing (discover Les Crêtes and panoramic views – the region's geographical profile provides access to exceptional, high-altitude viewing points), everybody can enjoy uninterrupted views over snow-capped summits. At 3,400 metres, discover a viewing point (not suspended in the air) that offers 360° panoramic views over the Écrins National Park. At 2,400 metres, from the terrace of the Le Diable au Coeur (bistronomic slopeside) restaurant, see incredible south-facing views over Vénéon valley. At 2,200 metres, at the top of the Vallée Blanche sector, there are magnificent viewing points over Oisans resort. In the resort, at 1,600 metres, above the 4-star Chalet Mounier hotel, enjoy uninterrupted views over our legendary mountain, La Muzelle. And why not also experience these viewing points from the air, in a paraglider

flight with an instructor (between 2,400 metres and 1,600 metres).

- ▶ Indulge your inner gourmet **at the highest altitude Michelin star restaurant in Isère**, Le P'tit Polyte and meet its Chef, Tanguy Rattier (CHALET MOUNIER)!



- ▶ After the exertion comes the **REWARD at CHAT GOURMAND**, a genuine laboratory for the tastebuds. From Oisans tarts to 3-chocolate cake and Les Lauzes (a square of gourmet chocolate, coated in blueberry or raspberry meringue, that takes 48 hours to make).
- ▶ A whole different world, the local, friendly, cosy, and sustainable **YONDER CAFE**. A plateful of passion for healthy eating!



- ▶ The unmissable **CRÊPES À GOGO** for its authentic Breton crêpes and incredible atmosphere that remains the same after 30 years!

► Meat-eaters and connoisseurs won't want to miss: **LES 2 SAISONS** and **Les MAUVAIS GARÇONS** restaurants.

► At **GRAIN DE SEL**, we love French cooking that bubbles away for hours made from seasonal local produce, as well as the creamy chicken cordon bleu dish with a twist, as showcased on the France 3 Météo à la Carte TV programme!

► **LE TRIBECA**, for a retro atmosphere, vintage skiing, and bistro cuisine (traditional casserole dishes).

► To try POTENCE suspended beef skewers, head to **LE PETIT CHARBON DE BOIS**.

► Génépi (local liquor) is made and can be found and bought on our summits at **GENEPI DES SOMMETS!**



► Not forgetting local produce: cheese, sausages, traditional 'crozets' pasta, blueberry jam, honey... From the **VIEUX CHALET** or **LA FROMAGERIE DES ALPES**.

► **BIERE DES GLACIERS** made in Les 2 Alpes by **DIABLE AU COEUR**, has innovated with a 2nd batch that has a fruitier, lighter taste and is paler than its first amber-coloured batch!

► With or without alcohol, Queen-M

& Joli-Coeur cocktails at the **CHAMOIS LODGE** are astounding (alchemy, discovery, innovative, unusual combinations/local liquors mixed with fruit/vegetables and garden herbs).

► The **SPA COTE BRUNE...** treat yourself to a little pampering and enjoy the wellbeing benefits of a spa!

► For authenticity, artisanry and fantastic encounters, head to **VENOSC** and **MONT DE LANS** villages, accessible on foot, via gondola lift or chairlift.



► A lively place steeped in history... Take a jaunt to the **CAFÉ-MUSÉE CHASAL LENTO** (access via chairlift from Les 2 Alpes). It offers immersion in the history of our mountain village (Romans, peddlers, Chambon dam, the history of Les 2 Alpes) and an old-fashioned bistro where customers can enjoy a great time with locals and listen to their anecdotes at the bar!

► Switch off and listen to the call of the wild with Elisabeth, the creator of the **WOOD AND SENSES** workshop, which combines mediation with woodwork in the heart of the mountains!

► If you love artists, here are 2 unmissables: If you dream of having your very own baseball cap that you can't get anywhere else **"NEVER**

WITHOUT MY CAP" (NWMC), managed by Florian MARTIN, known as Flo, is a cap artist who makes them on site! Or admire the brushstrokes of local painter and artist: **SOPHIE DODE**.



► Unearth a pearl, a gem, or other treasure in the **CASADAMBRE** jewellery shop.

► For **decorative items** head to **ARLOT** and **BALALAÏKA!**





GREAT DEALS FOR WINTER 2021-2022

Contact

2 ALPES RESERVATION

+33 (0)4 76 79 24 38

reservation@les2alpes.com

www.les2alpes.com

BOOK ACCOMMODATION WITH COMPLETE PEACE OF MIND.

Cancellation is automatic with a 100% refund for decisions imposed by French and overseas governments (border closures or quarantine) and are covered by insurance in the event of a positive Covid-19 test.



SKI OPENING

**Saturday 27th Nov,
to Friday 17th Dec 2021**

50 to 55% off a 2-day skipass when you book accommodation + skipass direct from Les 2 Alpes central bookings office. From 175€ per person = skipass + one week in a 4-person apartment.

CHRISTMAS & CELEBRATIONS

**MAGIC AVENUE
shows and parades**

From 500€ for Christmas week in a 4-person apartment.

“LES 2 ALPES NIGHT SNOW TRAIL” WEEKEND SPECIAL

From 260€ per person = NIGHT SNOW TRAIL reservation + 2-day skipass + 2 nights in a 2-stay hotel in a double room with breakfast.

SKI CLOSING

**Friday 15th April
to Sunday 24th April 2022**

50% off 2-day and longer skipasses when you book accommodation + skipass direct from Les 2 Alpes central bookings office. 2-day skipass = 54€ instead of 108€ / 6-day skipass = 135.30€ instead of 270.50€

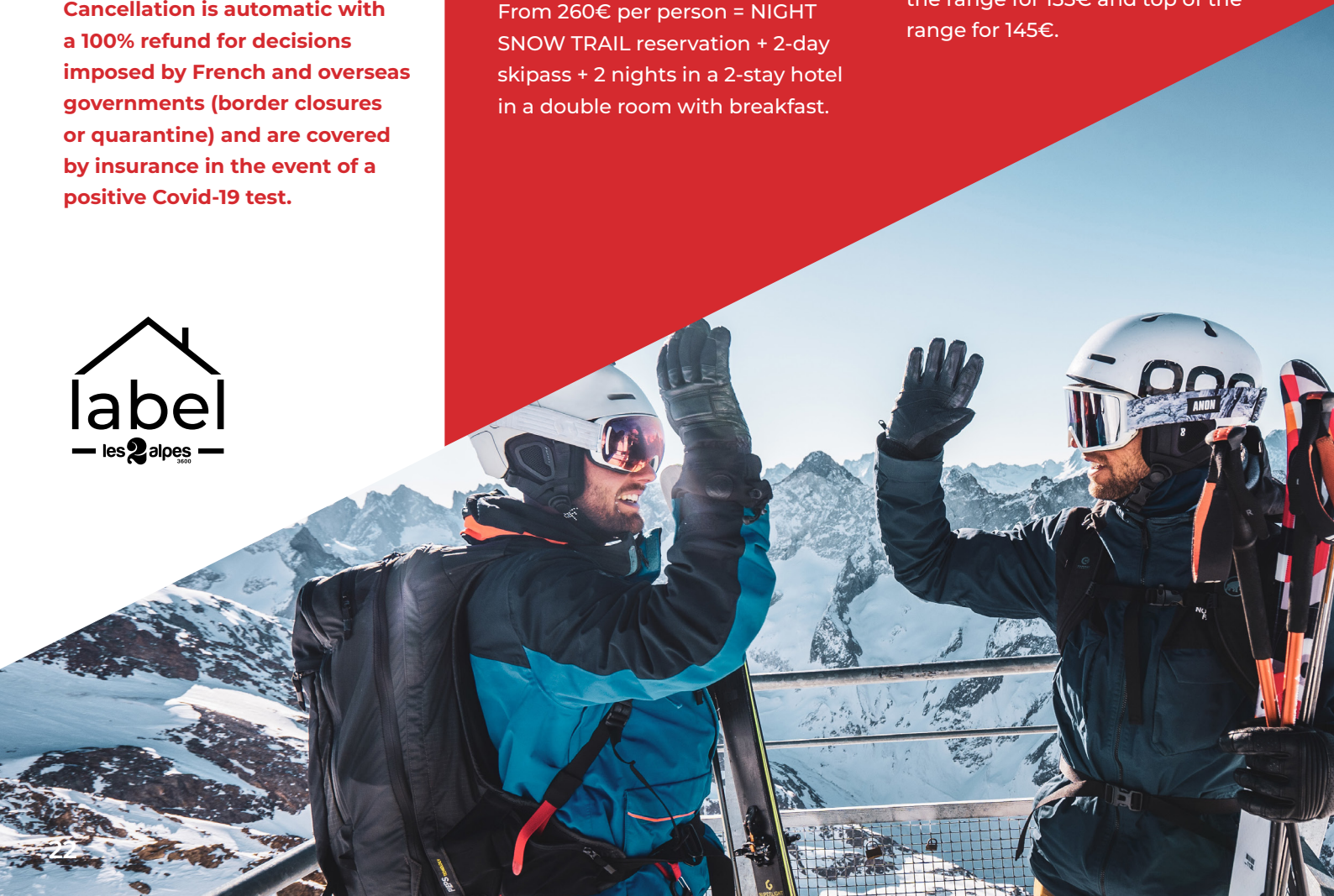
SKIPASS

2 days or longer

5% off, pre-sale only. Offer limited to the joint purchase of accommodation and skipass from Les 2 ALPES RESERVATION.

SKI EQUIPMENT

SKI EQUIPMENT at preferential rates in partnering shops: 7 days for the price of 6, child's pack for 55€, adult beginners for 99€, middle of the range for 135€ and top of the range for 145€.





GETTING TO LES 2 ALPES



BY AIR

Grenoble Alpes Isère (1hr 30mins),
Lyon Saint Exupéry (2hrs)
and Geneva airport (2hrs 30mins)



BY TRAIN

Arriving at Grenoble train station
(1hr 15mins by car or taxi and 1hr 45mins by bus)



BY BUS

From Grenoble airport:

BEN'S BUS shuttle bus straight to the resort (2hrs) /
From 42€ one way.

From Lyon airport:

OUIBUS shuttle bus (1hr) then transaltitude
(1hr 45mins) from Grenoble to the resort / From 30€ one way.

From Grenoble airport:

TRANSALTITUDE shuttlebus (1hr 45mins)
/ From 18.90€ one way.



PRESSE SERVICE CONTACT

LES 2 ALPES TOURIST OFFICE

Héléna HOSPITAL

Tél : +33 (0)4 76 79 54 45

Mobile : +33 (0)6 75 20 92 05

helena.hospital@les2alpes.com

PRESS AREA at www.les2alpes.com (press packs and press releases)

FACEBOOK HELENA PRESSE DEUX ALPES

TWITTER @HELENA_HOSPITAL

PHOTOS Please contact us if you need photos

Our photographer: @Les 2 Alpes_Pyrène Duffau

VIDÉOS If you need images or videos, please contact us or check out our YouTube channel:

<https://www.youtube.com/channel/UCgCGap8Zgt2cet7IIEIbPsA>

Our videographer: @Les 2 Alpes_Kevin Marchal

And don't forget that Les 2 Alpes is here for you...

We would be very happy to organise a personalised or group welcome to suit your media needs.

LES 2 ALPES TOURIST OFFICE CONTACT

Tél : +33 (0)4 76 79 22 00

www.les2alpes.com - info@les2alpes.com

Social media @2ALPES

1 unique HASHTAG : #HomeOfRide