

# HOME OF *Ride*

More than a resort, it's a four-season destination offering a range of experiences for all ages. With an abundance of celebrations and festivities in a warm, welcoming atmosphere, the Les 2 Alpes adventure can be enjoyed by everyone! And its future looks brighter than ever, with development plans ensuring its continuing success for the next fifty years!

**Extension of the summer season for October half term:** from 21<sup>st</sup> Oct to 5<sup>th</sup> Nov 2023

**The launch of the winter season:**

from 2<sup>nd</sup> Dec with the 1<sup>st</sup> FIS Snowboard Cross World Cup event of the 2023/2024 season.

More info at [www.les2alpes.com](http://www.les2alpes.com)



# EDITO

A leading ski resort in France's Isère department, **Les 2 Alpes** dates back to the 1940s and owes its international reputation to its high-altitude ski area (the highest ski area in France) at an altitude of 3,600 metres, as well as its events, celebrations, and friendly atmosphere. It's a winter holiday destination whose resort life and unique Les 2 Alpes mindset earn it a place in the TOP 10 French ski resorts (6<sup>th</sup>)!

**85% of visitors who head to Les 2 Alpes come for the skiing**, but Les 2 Alpes is also a multi-faceted winter destination with no end of appeal. Whilst you can ski to your heart's content in Les 2 Alpes, you can also recharge your batteries, take some time out for yourself, and reconnect with loved ones, enjoy the après-ski, delight your tastebuds, try out the non-ski activities, experience the local culture, learn from the locals, and venture into the heart of nature and its wide-open spaces...

Since 2022, Les 2 Alpes has been carving out its future

with new investments and equipment with regards the ski area and its ski lifts, as well as its accommodation, leisure facilities and events. Its future is taking shape thanks to an holistic vision and a regional strategy of the 50 years to come... guaranteeing the resort's social, economic, and sustainable growth, above and beyond its ski area innovations! And finally, Les 2 Alpes will once again be hosting a stage of the World Cup circuit: the FIS Snowboard Cross World Cup, on the 1<sup>st</sup> and 2<sup>nd</sup> December 2023.

## LES 2 ALPES KEY DATES

### October half-term holiday 2023

(MTB, E.bike, hikes, trail running, cyclism...)  
From Saturday 21<sup>st</sup> October to Sunday 5<sup>th</sup> November 2023.

### Winter 2023/2024

(1,300 metres – 3,600 metres)  
Les 2 Alpes winter ski season, from Saturday 2nd December 2023 to Sunday 28<sup>th</sup> April 2024.



## Les 2 Alpes IN NUMBER - WINTER



**3,600 M**  
The highest ski area  
in France



**250,000**  
Visitors per winter  
on average)



**1,719,500**  
Overnight stays  
+ 4.4% compared  
to winter 21/22

**3**

### Labels

Famille Plus, Label 2 Alpes, Qualité Tourisme



**1,650 M**  
Resort altitude  
(2 kilometre-long  
plateau with easy  
access to the ski runs  
and shops)



**1,3 M**  
Skier days sold



**31,998**  
Tourist beds  
43.3% professional  
beds, 16.6% privately  
let beds, 38% non-  
marketed beds

## TOP 10 NATIONALITIES

(mostly European)

**57.6 %**  
FROM FRANCE

**42.4 %**  
OUTSIDE OF FRANCE



**57.6 %**  
FR



**19.7 %**  
GB



**6.2 %**  
NL



**3.5 %**  
BEL



**2.3 %**  
ITA



**2.3 %**  
CH



**1.5 %**  
POL



**1.4 %**  
DK



**0.8 %**  
ALL



**0.6 %**  
ES

### 173 million

Average turnover  
generated in the resort  
(sports shops, ski schools,  
retail, restaurants,  
accommodation, and ski  
lifts).

### 6<sup>th</sup>

French ski resort (out of 232)  
/ as ranked by Skidata.io  
(organisation which is set to  
become the leader in terms of  
classifying ski resorts, much like  
Michelin with its restaurants star  
ranking system).





# What's New ON THE SKI AREA

Innovative, modern, and eco-friendly developments to ensure the resort's success for the next 50 years!

Since SATA GROUP took over the management of the ski lifts in 2020, redesign and development plans for the ski area have been coming in thick and fast, with the aim of providing an enhanced offering for skiers, as well as cyclists, mountain bikers, hikers, trail runners, walkers, snowshoers, ski tourers...all-year-round. The decisions made by SATA GROUP, who operate Les 2 Alpes' ski area, are all about modernity, skier flow, accessibility, and comfort, in accordance with environmental guidelines and advice given by the administrative and planning authorities. These decisions have also been made with the resort's economic, social, and sustainable future in mind. The current redevelopment plans take into account the environment, the local and regional community, as well as the ever-changing needs of visitors to Les 2 Alpes.

## 1 NEW LOOK FOR VALLÉE BLANCHE SECTOR: OPTIMISATION, LAYOUT & ACCESSIBILITY

Skiers and hikers can choose from 2 sectors in Les 2 Alpes, one going up to the high-altitude ski area at 3,600 metres (east), and the other, set between 2,100 metres and 1,650 metres (west), known as Vallée Blanche.

Already featuring many highlights, the latter will reveal its exceptional potential from winter 2024. The redevelopment project will enable all types, levels, and ages of skier to enjoy all disciplines (skiing, hiking, mountain biking, e-biking, snowshoeing, ski touring, etc.), in all 4 seasons.

With the new ski lifts (Super Venosc gondola lift and the Vallée Blanche Télémix built in 2023), access has been made easier and faster for skiers and hikers alike, meaning everyone can now take to the heights. From winter 2024, beginners will be able to enjoy the new Vallée Blanche green run. Not only will this area be accessible to all, but it will allow for a better distribution of snowsports enthusiasts across the entire Les 2 Alpes ski area.

### New Vallée Blanche green run

Development work on the Vallée Blanche green run started last year. Summer 2023 saw the work continue, with the completion of two sections, and the installation of its snowmaking network.

**It is split into 2 sections, on the gentle incline beneath the Kanata restaurant:**

- One section joins the Vallée Blanche TMX (G1) base station.
- One section joins the lower (G1) Super Venosc gondola (G1) base station, passing between the «Les Terres de Venosc» chalets and the pine forest below.

**The whole area will be equipped with a snowmaking network between 2,100 metres and 1,650 metres.**

## 2 BEGINNERS TAKE CENTRE STAGE ON THE NEW LEARNING ZONES

Linked to a large learning zone, the lower slopes embarked on a redevelopment project in 2022 (Vikings, Rivets and Bosquets magic carpet), which will be completed for winter 2024.

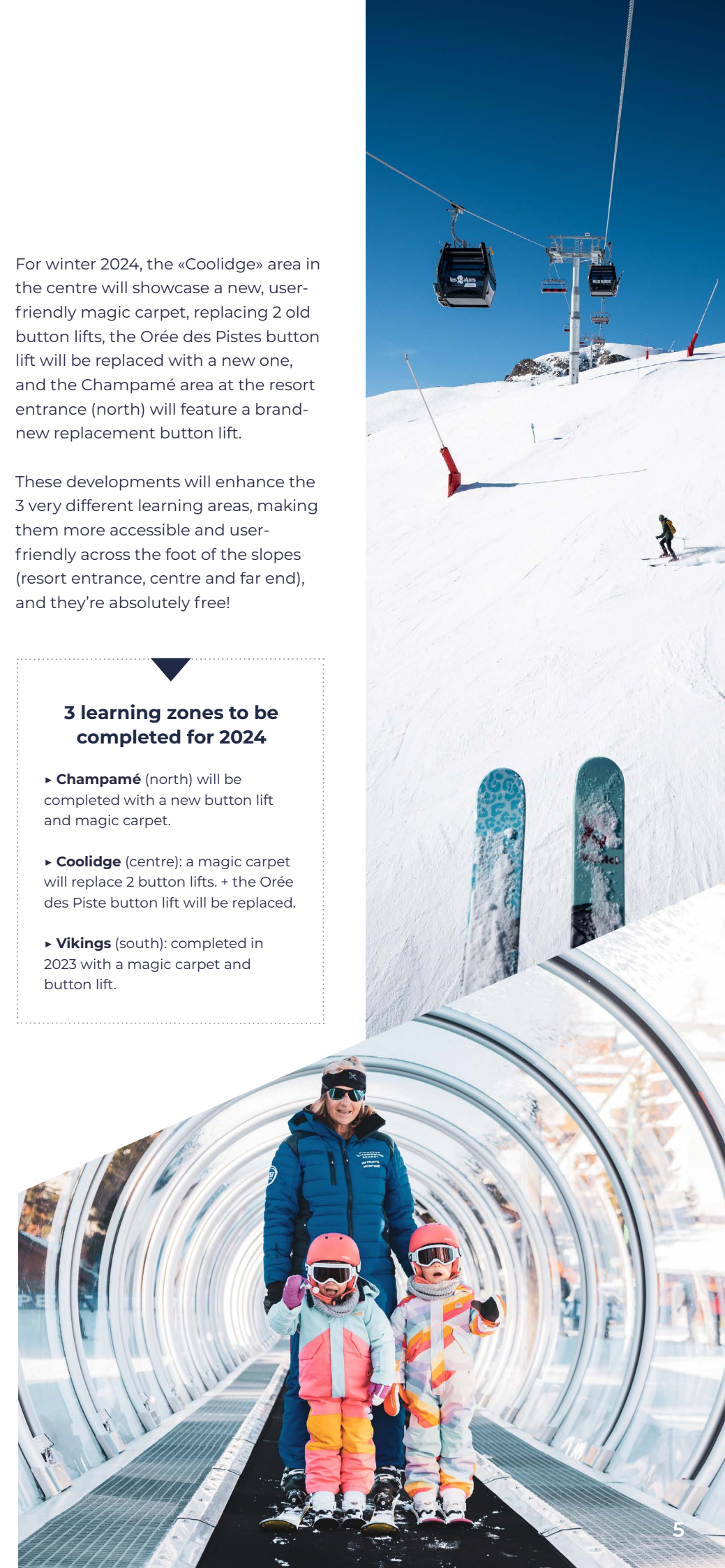
It comprises 3 areas set between the resort entrance (north), centre, and far end (south). The idea behind this is to encourage beginners to use the ski lifts, particularly magic carpets, and state-of-the-art button lifts.

For winter 2024, the «Coolidge» area in the centre will showcase a new, user-friendly magic carpet, replacing 2 old button lifts, the Orée des Pistes button lift will be replaced with a new one, and the Champamé area at the resort entrance (north) will feature a brand-new replacement button lift.

These developments will enhance the 3 very different learning areas, making them more accessible and user-friendly across the foot of the slopes (resort entrance, centre and far end), and they're absolutely free!

### 3 learning zones to be completed for 2024

- **Champamé** (north) will be completed with a new button lift and magic carpet.
- **Coolidge** (centre): a magic carpet will replace 2 button lifts. + the Orée des Pistes button lift will be replaced.
- **Vikings** (south): completed in 2023 with a magic carpet and button lift.





### 3 – NEW SKI LIFTS: OPTIMISING SKIER FLOW IN BOTH DIRECTIONS

Redevelopment of facilities on the lower slopes: the Diable Télémix (completed in 2022), the new Belle Étoile Télémix (for winter 2023/2024) and the forthcoming Jandri 3S cable car (set to be completed by winter 2024/2025), have all been designed to enhance the flow of skiers from the resort to the high-altitude ski area, whilst also making it easier to get back to resort, depending on how busy it is, and snow conditions (resort entrance, centre and far end). Visitors will enjoy quality skiing at altitude, with the promise of accessibility for all in the future (breathing in our fresh mountain air and enjoying well-being with or without the snow). Equipped with all the latest technology, the resort's forthcoming signature Jandri 3S cable car will be more than just a form of transport, it will be a real Les 2 Alpes experience for many years to come!

#### A NEW ENVIRONMENTALLY FRIENDLY DEVELOPMENT FOR DECEMBER 2024: THE JANDRI 3S CABLE CAR

The forthcoming Jandri 3S will replace the existing ski lift, which dates back to 1985 (Jandri Express), offering more comfort, less impact on the natural environment, and enhancing the flow of passengers to and from the resort. To fulfil to these different requirements, the choice of lift was made by Les 2 Alpes and St Christophe en Oisans municipalities and registered as a public service. The SATA Group reviewed the best possible ascent line, carrying out all the necessary environmental, technical, and aesthetic impact studies required. Carrying out works

of this size means considering the ecosystem, fauna, flora, wetlands, water resources... and establishing a vision for the next 50 years, such as the aesthetics of the different stations and their installation, to respect the environment and the comfort of users. The environment plays an important role in the decision-making process: giving more space back to nature (using 7 pylons instead of 17, dismantling the old equipment), reseeding, consuming less energy per person transported, working with local businesses, using high quality materials such as wood, creating jobs, site facilities at altitude (avoiding an increase in carbon emissions from transport), the dismantling of old equipment, burying power lines...

**Fabrice Boutet,**  
Sata Group General Manager:  
*«The 3S cable car will be a huge boost for Les 2 Alpes, taking into consideration the ecosystem, the well-being of visitors and the life of the local community throughout the year. Sata Group's main aim is to make the mountains accessible to all, in all 4 seasons, for all sports disciplines, with a modern, comfortable lift that has less an impact on nature. Bringing the Jandri back to life will take 15 months, a major project that involves the collaboration and shared expertise of the Sata Group, Les 2 Alpes Municipality, socio-professionals, the Tourist Office, and our business partners. This project represents our vision for the next 50 years! It is a global development designed for all our visitors, all sports disciplines, and for all seasons. Not only does it have an economic impact (Sata Group is an important economic stakeholder in the Oisans community), it also has a social (ensuring the well-being and employment of locals) and environmental impact (we live and work here and the natural environment is important to us.) We want to take care our mountains and not damage them in any way. Everything is done to protect and showcase the mountains.»*



**Marie Davy,** architect (ATEAM) :  
*«I am very proud to be working on this project. It is demanding and stressful, but it is a challenge that I'm happy to take on.»*

**Jean-Marc Griellier,**  
Poma's project manager:  
*«This is an important project for us, which we can and will accomplish.»*

**Thierry Hugues,**  
Sata Group project director:  
*«It is above all a venture involving men and women, filling us with pride, energy, and motivation!»*

**Why is this such a large-scale project?**  
*«It is not only huge in length (1,600 metres to 3,200 metres), with over 40km of cables, pylons that are up to 50 metres high involving extensive installation work, the number of workers (300) across 3 stations, including site facilities for 120 people, and a concrete plant at 2,600 metres, but also by the volume of work to be delivered in the allotted time frame!», Jean-Michel Mellet, Sata Group business coordinator.*

**What are the benefits of the project?**  
*«The current Jandri Express no longer meets modern requirements. Built in 1985, it requires continual maintenance and does not provide sufficient passenger flow from the foot of the slopes. The new lift will double the flow (from 1,700 to 3,000 people/hr), whilst increasing user comfort. It will transport skiers, mountain bikers and hikers across the 4 seasons, with a journey time of just 17 minutes instead of 40.» Thierry Hugues, Sata Group project director.*

**What is a 3S system?**  
*«The 3S is a combination of the best gondola and cable car systems. Comprising 2 support cables and 1 hauling cable, it is a silent, high-performance lift, suitable for large distances and high winds, even above 28 metres/second. This technology allows a high passenger flow over long distances, such as here in Les 2 Alpes, between 1,600 metres and 3,200 metres. Moreover, there will only be 7*

*pylons instead of the current 17, which is an incredible eco-friendly advantage, guaranteeing less impact on the environment, less maintenance, and more savings in terms of energy use (in relation to the number of people transported.)» Jean-Marc Griellier, Head of the Poma Project.*

#### THE BELLE ÉTOILE TÉLÉMIX REPLACES THE BELLE ÉTOILE CHAIRLIFT, FOR IMPROVED PASSENGER FLOW FROM THE NORTHERN SECTOR (CHAMPAMÉ, ENTRANCE TO LES 2 ALPES) AND CONTINUED MODERNISATION OF THIS AREA.

The Belle Étoile Télémix (6/10-person detachable chairlift gondola) will improve the flow of skiers to the Crêtes sector (2,100 metres) and the high-altitude ski area, making it easier to get back down to resort. It comprises a modern 10-seater cabin with a 6-seater detachable chairlift, taking in a 523-metre altitude difference between the resort and the Crêtes sector at 2,100 metres. The new lift will double passenger flow, taking it to 3,000 people/hr! It is scheduled to open in December 2023.

##### Caractéristiques du Jandri 3 S

- 6,4 km long
- 1480 metre vertical drop
- Base station G1 : 1,650 metres
- Mid-station G2-G3 : 2,600 metres
- Arrival station G4 : 3,200 metres
- 55 cabins
- 24 seats & 8 standing places
- 8m/s / 28.8 km/hr
- Flow: 3,000 people/hr





## What's New IN TERMS OF ACCOMMODATION ACTIVITIES/SHOPS



### ACCOMMODATION

**HOTEL Côte Brune** has been awarded a 4th star.

The **HOTEL CLUB Belambra** has been completely renovated and will re-open on 23 December. It offers PREMIUM holidays thanks to a 5B classification (the ultimate at Belambra). This top-of-the-range classification offers customers an All-Inclusive formula, a range of restaurants with generous buffets, childcare for children aged 4 months to 17 years, a ski-in ski-out service and ESF group ski lessons - in other words, a new holiday club to pamper yourself.

### ACTIVITIES

This winter, **night skiing** will be available on the Vallée Blanche sector. Since 2022, this sector has undergone many changes, making it more modern and more accessible, with the new Vallée Blanche green run meaning a return to night skiing sessions. Every week, skiers can hop on the Super Venosc gondola lift or Vallée Blanche telemix lift up to La Troika slopeside restaurant for a fun evening, followed by a night-time ski descent back to the resort.

Traditionally, **glacier hiking** takes place in spring/summer (from May to August), but for winter 23/24, from March onwards, the mountain guides office will be running guided sessions at altitudes of more than 3,400 metres. Glacier hiking brings you up close

to the summits, giving you the chance to try your hand at mountaineering. Even if you've never done it before, it is a unique experience that is accessible to all! Hike over the high-altitude ski area above 3,000 metres with a mountain guide, starting off with crampons then moving on to ice axes, enjoying a breath of fresh air, far from the hustle and bustle, and soaking up stunning 360° views. It's a one-of-a-kind moment, a special memory to share, and a magical adventure that children (over the age of 10) can enjoy too!

### SHOPS AND SERVICES

**LE PETIT COSY** is a haven of home decor. A dream of hers for many years, Amandine has finally been able to open her own shop filled with good quality, eco-friendly limited-edition items that are mainly made in France.

**LA PIZZERIA** restaurant  
A traditional Italian pizzeria has opened its doors in the heart of Les 2 Alpes. Francesco, Lionel, and Mika will treat the tastebuds of pizza lovers. Using only good quality, fresh ingredients from Italy, the menu is varied and reasonably priced, offering great value for money!

**O2BRUNCH** provides home delivery of breakfast and brunch, prepared according to customer's wishes, using homemade, fresh, local produce.



## Les 2 Alpes SKI AREA

### Les 2 Alpes ski area's TOP 10

A leading ski resort in France's Isère department, Les 2 Alpes owes its international reputation to its high-altitude ski area (the highest ski area in France), that reaches up to an altitude of 3,600 metres. Between altitudes of 3,000 and 3,600 metres, the high summits guarantee skiing on natural snow in any season, and skiers can enjoy a continuous vertical drop of 2,300 metres between 3,600 metres and 1,300 metres (including 10 kilometres on a blue run between 3,600 metres and 1,600 metres). The higher you climb, the more accessible the runs become for intermediate skiers. It's a ski-in, ski-out resort, and whether as a couple, with family or friends, a beginner, intermediate or expert, you can all get together on parallel ski runs and meet up easily, and best of all, the terrain is highly varied (marked runs, off-piste, run runs, slalom stadium...).



**1** - Les 2 Alpes ski area reaches up to 3,600 metres. Top quality skiing guaranteed!

**2** - Les 2 Alpes boasts incredible vertical drops (from 3,600 metres to 1,300 metres)!

**3** - 70% of the ski area is above 2,000 metres

**4** - Ski-in/ski-out resort access, or via ski lifts (Belle Etoile telemix, Jandri Express and Diable telemix).

**5** - A redesigned snow front for beginner skiers. State-of-the-art button lifts and magic carpets make skiing so much easier!

**6** - The Vallée Blanche sector is now accessible to everyone, with its new green run and telemix lifts, inviting beginners to explore new horizons!

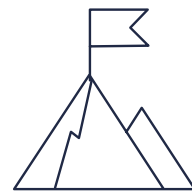
**7** - 2 Alpes snowpark (Toura sector – 2,600 metres), a freestyle area for all levels and all ages!

**8** - The Freeride possibilities are incredible (800 hectares), with itineraries running from 3,600 metres to 1,400 metres. It's very similar to La Grave, but much quieter. There's something to suit all levels, depending on what you feel like doing. As with any off-piste route, it is important to follow the advice of professionals, to ski with a guide or instructor, and to kit yourself out with the correct safety equipment (arva, shovel and probe).

**9** - The higher you go in Les 2 Alpes, the easier the runs are. Beginner skiers who start off at low altitudes may well be able to ski at more than 3,000 metres by the end of their stay and take the gondola back down to resort!

**10** - Five ski lifts at the bottom of the slopes are free of charge. Whether you're a beginner or not, everyone can get off to an easy start!





## The ski AREA IN NUMBERS



200

**Kilometres of runs (420Ha)**  
70% of the ski area is above 2,000 metres



3,600 m

**Top of the ski area**  
GUARANTEED SNOW!



2,300 m

**Vertical drop (in metres)**  
without taking a single ski lift



10

**Kilometres of blue runs**  
between 3,200 metres and 1,600 metres  
(resort)



7

**Sectors**  
High-altitude ski area (3,600), Toura (2,600),  
Fée (2,200), Diable (2,400), Crêtes (2,100),  
Resort (1,650), and Vallée Blanche (2,100)



40

**Ski lifts**  
13 button lifts, 15 chair lifts (including  
3 telemix lifts), 5 gondola lifts, 1 funicular,  
5 magic carpets and 1 inclined lift)



82

**Ski runs**  
9 black, 15 red, 44 blue and 14 green



10,000

**People**  
= average daily visitor numbers / 15,000  
during February school holidays / Record  
visitor numbers on 21/02/23: 19,686



23

**Piste groomers**  
working all year round



35

**Piste groomer drivers**  
Working daily from 6.30pm to 9.30am



70

**Hectares of artificial snow**  
270 snowmakers / 19% of the ski area



5

**Free ski lifts**  
at the bottom of the slopes / Champamé  
magic carpet, Les Limaçons button lift,  
Coolidge magic carpet, Vikings magic  
carpet & button lift

### LES EQUIPMENTS

1 freestyle area (2 Alpes snowpark  
on La Toura sector at 2,600 metres),  
1 timed parallel slalom video zone,  
1 speed gun on the glacier sector,  
1 DVA Park, 3 slalom stadiums,  
1 Belvédère des Écrins viewing  
platform, 1 ice cave, «selfie» spots  
and 8 slopeside restaurants.



## Winter 2023/2024 SKIPASS PRICES

PRE-SEASON FROM 2<sup>ND</sup> TO 22<sup>ND</sup>  
DECEMBER 2023 / END OF SEASON  
FROM 13<sup>TH</sup> TO 28<sup>TH</sup> APRIL 2024

### 1-day price

Adults: 51€ / Senior citizens (65-  
71): 47.50€ / Children (5-12): 41€

### 1-week price

Adults: 252€ / Senior citizens:  
235.50€ / Children: 201.50€

SEASON FROM 23<sup>RD</sup> DECEMBER  
2023 TO 12<sup>TH</sup> APRIL 2024

### 1-day price

Adults: 60€ / Senior citizens:  
56€ / Children: 48€

### 1-week price

Adults: 296€ / Senior citizens:  
277€ / Children: 237€

1-day / lower slopes: 23€  
1-day / small ski area: 32€  
½ day morning or  
afternoon skipasses are  
also available





# Les 2 Alpes A COMMITTED SKI RESORT

The whole world is at a point in its history where tourism, or the way we think about holidays, is being called into question for environmental reasons. On the one hand, 52% of greenhouse gas emissions come from transport to our destinations, but on the other, only 3% come from the ski area (slope maintenance, ski lifts). No-one is 100% good at what they do, but local, regional, national and collective awareness is growing and moving towards «better travel». The Les 2 Alpes is aware of global warming, its environment, natural resources, energy and inflation, which is why all Les 2 Alpes projects concerning leisure property, the ski area or the development of our Commune are thought out and organised with a long-term vision and a primary objective, which is to limit our carbon impact.

► **The ski area has put in place a series of changes with the environment in mind:** closure of some ski lifts based on the number of people; adapting the speed of the lifts depending on the number of customers; and limiting snow production. In addition, the drivers of the snow groomers have undertaken training to learn how to reduce the energy consumption of the machines.

► Les 2 Alpes is aiming to become carbon neutral. The resort is committed to following the **16 eco-engagements** put in place by Domaines Skiables de France (DSF). [https://www.domaines-skiables.fr/smedia/filer\\_private/e8/0e/e80eea76-8440-4f81-a040-95497313f243/eco-engagements-english.pdf](https://www.domaines-skiables.fr/smedia/filer_private/e8/0e/e80eea76-8440-4f81-a040-95497313f243/eco-engagements-english.pdf)

► Les 2 Alpes invites each customer (250,000 on average per winter) to reduce their **carbon impact by practising good eco-gestures**. An eco-guide is available at the Tourist Office.



► For 25 years, the ski area between 3000 m and 3600 m has been measured and enhanced on daily by engineers from the ski lift company. Before any action is taken to preserve the area, analyses are carried out to monitor changes in the glacier and its snow. Today, the snow groomers are fitted with GPS systems and radar which can measure the snow and compare it to benchmark levels from the start of the season. This precise data, along with statistics gathered, outline the impact of skiing on the glacier, melt levels, as well as the effects of steps taken, such as artificial snow production, snow barriers and trapping techniques, as well as grooming. The snow engineer and his team organise the work of the snowmakers and water usage, as well as the daily grooming, installation of snow traps (wooden structures that trap the snow and pipes) to slow down the melting and ensure that the glacier re-forms each

season! Its north-westerly exposure and domed shape with a gentle slope (non-suspended ice cap) mean that it melts less because the sun's rays are dispersed over a wider area than on a steep slope.

► Les 2 Alpes is aiming to obtain the **Flocon Vert label**, created by the Mountain Riders Association. Today, only eight ski resorts have been awarded the label.



► The **Les 2 Alpes town hall is committed** to reducing the area's environmental impact: public buildings are getting better insulation and less lighting is being used; free transport within the resort has been put in place in the form of free electric buses; and the resort now has several electric terminals for recharging hybrid or electric cars (in front of the city hall, by the tourist office, and in Venosc village, with more being created soon near private accommodation). Plus, Les 2 Alpes has 33 compost bins across the resort, as well as recycling bins.

► Every year, at the end of the winter and at the beginning of the summer, the tourist office, the lift company, the ski schools and local businesses join forces to **collect waste**.

► In April, **ski, snowboard, and boot recycling** takes place in Les 2 Alpes and across the Oisans region.

► The criteria for the **Les 2 Alpes Label** (flats labelled by 2 Alpes Réservation) now include environmental values: compulsory double glazing, radiators (inertia or equivalent), high-quality materials, etc.

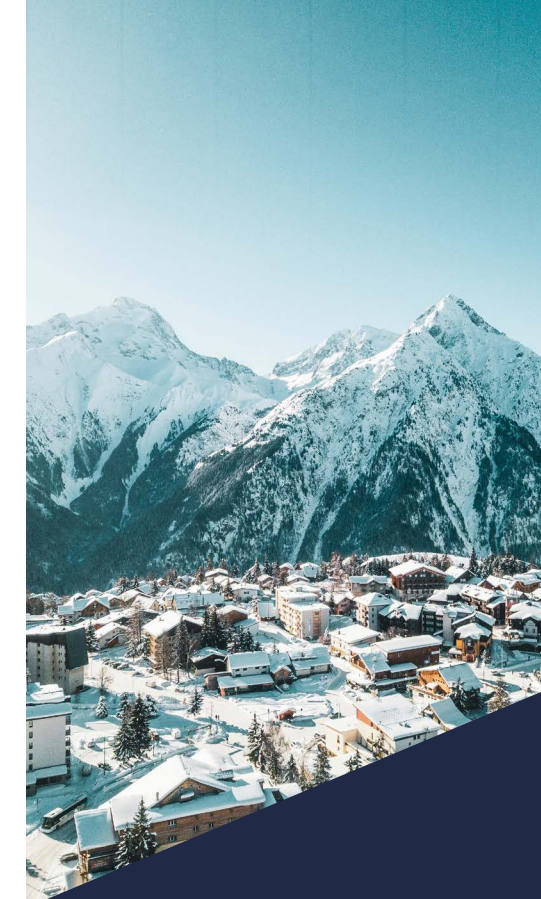
## A practical and intelligent new tool for organising your transport to Les 2 Alpes :

► Les 2 Alpes is the 1st mountain destination in Isère to use the 360° Smart Mobility system developed by Antidots. From where you are, getting to Les 2 Alpes will be easier, more efficient and smarter. Customers from all over the world will be able to book their multimodal transport, «Door to Door», from home to Les 2 Alpes in a single purchase (e.g. plane+train+bus or train+car hire). The various offers available will be linked to a carbon footprint, enabling customers to choose the most environmentally-friendly mode of transport. Booking and purchase: [go2alpes.com](https://go2alpes.com)

## Average carbon footprint of a day's skiing

(info provided by ADEME, UTOPIES)

► **On average we emit 48.9KG CO<sub>2</sub>e per day on a ski holiday = 48.9KG CO<sub>2</sub>e.**







# Microadventures AND OTHER LEISURE ACTIVITIES



## Contemplative Micro-Aventures

EXCEPTIONAL EXPERIENCE FOR  
WALKER'S AT 3,400 METRES

► It's easy to get up to the high-altitude **ski area**. The Jandri Express gondola lift takes skiers and walkers up to 3,200 metres in just 30 minutes. Walkers can continue up to 3,400 metres on the funicular railway. Embark on Les 2 Alpes' **immersive journey to the summits** at 3,400 metres, with breath-taking 360° views from north to south, between Mont Blanc and the Mont Ventoux, from west to east, between the Massif Central and Italy, taking in the Écrins National park, the Aiguilles d'Arves, Grandes Rousses, Belledonne, Chartreuse, Vercors, Mont-Aiguille... Majestic mountains that create emotions that are as exceptional as the views before your eyes.

Make sure you pay a visit to the **Écrins viewing platform** - a «step into the void» at altitudes of 3,400 metres, accessible to both skiers and walkers. It boasts panoramic views over the Écrins national Park. Then explore the **ice cave** at 3,400 metres. A morning or afternoon of new discoveries, natural beauty, and emotions.

► **Don your snowshoes and head off in search of chamois mountain goats**  
Set off on snowshoes to see (from a distance) a wintering zone chamois goats have chosen to make their home! What could be more wonderful than seeing chamois goats in real life and learning all about how this emblematic animal has adapted to life in the mountains? The snowshoe hike in search of chamois takes 2 ½ hours across easy terrain (100-metre vertical incline). Available to the over 7s, it is organised by Les 2 Alpes mountain guides office (mountain leaders) and is part of the "National Park Spirit" walks set up by the French national parks.

► **Glacial adventures for everyone (see. New)**  
Traditionally, **glacier hiking** takes place in spring/summer (from May to August), but this winter, from March onwards, the mountain guides office will be running guided sessions at altitudes of more than 3,400 metres. Glacier hiking is your opportunity to climb the summits as part

of a rope team, equipped with crampons and accompanied by a mountain guide. Give mountaineering a go in a safe environment. With a 200-metre vertical incline, between 3,400 metres and 3,600 metres, it is accessible, easy (children from the age of 10 can take part) and exhilarating (adrenaline rush and a breath of fresh air guaranteed). Explore the mountain summits in a new way, soaking up stunning 360° views... It's a one-of-a-kind, magical microadventure!

## Micro-sporting adventures

► **Get away from it all on an E-MTB on snow!**

Trail Hunter MTB and ChezBob are specialists in electrically assisted mountain biking sessions in Les 2 Alpes, whatever the season. Electrically assisted mountain biking gives you the chance to experience a different side to the resort, with your bike tyres in the snow, enjoying new snowsports and cycling thrills. This unique sporting activity offers up to 400 metres of vertical, with different levels available, both day and night.

► **Take flight on a paraglider with an instructor**  
between 2,400 metres (top of Le Diable chairlift) and the resort at 1,600 metres, overlooking the Ecrins National Park and the resort. Guaranteed thrills and stunning views over the mountains and Les 2 Alpes! In good weather, there's nothing quite like it – taking off from Le Diable sector at 2,400 metres, for a flight over the mountains with your skis on and strapped to an instructor. Whilst early season flights tend to mainly descend, as the thermals change, you'll find yourself going up into the skies more, admiring views of the Ecrins National Park, flying over Les 2 Alpes, the Vénéon valley (Venosc and the turquoise waters of the Vénéon River), the Roc de la Muzelle, Pic de Venosc and Croix de Pied-Moutet. But wherever the flight takes you, it will blow your mind!

## Immersive micro-adventures

BEHIND THE SCENES OF THE SKI  
AREA

► **A morning with the ski patrollers in Les 2 Alpes: FIRST TRACKS SKIING**  
Every Tuesday, from 8am, Les 2 Alpes' ski patrollers invite holidaymakers to learn all about the work they do as part of the FIRST TRACKS SKIING activity: work stations, daily responsibilities, making the ski runs safe, keeping visitors informed, rescues, dog-handling, avalanche blasting, opening the ski runs ... Holidaymakers get to open the runs with the ski patrollers; an incredible privilege to share in the early hours of the morning, followed by a delicious breakfast at 2,600 metres.

► **An afternoon with piste groomer drivers: ALONGSIDE THE PISTE GROOMERS AT 3,200 METRES**  
Climb aboard a piste groomer vehicle to discover the world of snow professionals. The slopes and snow mantle are maintained every day of the year, even when the season comes to an end. In winter, the runs are groomed as soon as the slopes close until the early hours of the morning, and in spring/summer every afternoon until the evening. These professionals are mountain lovers who enjoy the peace and quiet, and the beauty of the landscapes. They are part of the lucky few who get to watch the sun set and rise. Spend an afternoon with them, learning about their daily routines and their profession. 30-minute sessions every Wednesday from 1.30pm to 4.30pm at 3,200 metres and 3,400 metres.

GET AWAY FROM IT ALL IN THE  
VILLAGE OF VENOSC AND ITS  
SURROUNDING HAMLETS TO FIND  
OUT MORE ABOUT THE LIFE OF  
YESTERYEAR AND THE HISTORY OF  
LES 2 ALPES

In the heart of the Vénéon Valley, on the edge of the Ecrins National Park, Venosc (one of the two villages that originally formed Les 2 Alpes) is home to hundred-year-old houses in the typical setting of Oisans, just 8 minutes from Les 2 Alpes via the Venosc gondola lift. Little pedestrianised streets invite you to a peaceful walk far away from the hustle and bustle! Charming shops wind

their way along the village's streets, where characterful shops with arched ceilings offer a range of quality products made by passionate artisans (wood, leather, jewellery, fabric, honey, candles, fragrances, decorative items, little children's toys...), as well as a traditional guided tour every Tuesday from 10am to 12.30pm. Tourist Office professionals who are passionate about the Vénéon (the river running from La Béarde through Saint-Christophe, Venosc and Bourg d'Oisans) explain its local history, geology and geography, whilst relaying a great many tales about Venosc and its hamlets. 2 ½ hours of curiosities, a wealth of information about the inhabitants of yesteryear, how they survived, and their lives through the decades up to the creation of Les 2 Alpes.



## Nighttime Experiences

► Tuesdays and Thursdays: in conjunction with La Troïka slopeside restaurant, the ski and MTB schools run **E-MTB / ski touring evenings**, followed by a traditional dinner. They head up to the Vallée Blanche sector at nightfall, over a 400-metre vertical climb, then enjoy a delicious meal at La Troïka slopeside restaurant, before heading back down to the resort beneath the stars.

► Wednesdays: **Non-skiers can also enjoy an evening at altitudes of 2,100 metres** just above Les 2 Alpes, on the Vallée Blanche sector. After a 3-minute journey in the Super-Venosc gondola lift, enjoy an apéritif beneath the starry skies, followed by a fondue Savoyard and live music in the warmth of La Troïka restaurant. Experience a unique setting and welcoming atmosphere «by night».

► Thursdays: **The Venosc gondola lift, linking Venosc village to the resort of Les 2 Alpes, runs an evening service every Thursday** until 10.30pm. Holidaymakers staying in Venosc can head up to Les 2 Alpes for the evening, and those staying in Les 2 Alpes can head down to soak up the charm of the traditional village of Venosc, meeting the local craftsmen and women and enjoying a treat for the tastebuds in one of its many restaurants.

► New – night skiing on the Vallée Blanche green run after a mountain dinner in La Troïka restaurant.



## Other winter Leisure Activities

Ski touring, trail running on snow, ice climbing, off-piste skiing, snowshoe hikes, horse-drawn sleigh rides, dog sledding, cani-rando hikes (snowshoes + husky dogs), rubber ring toboggan (onto a big air bag), tobogganing on the lower slopes, Snake Gliss sledding, indoor climbing, snowpark (2 Alpes snowpark), biathlon, handiski, Babysnow, spa and well-being, laser game, ice rink, shows at Les 2 Alpes Palais des Sports complex every Wednesday, bowling, cinema, market every Tuesday in Venosc and every Wednesday in Mont de Lans, a visit of Simon's blacksmith's forge in Venosc (gondola lift access from Les 2 Alpes), meeting the local craftsmen and women in Venosc, a visit of the génépi shop, wool spinning and carding demonstration in Mont de Lans every Wednesday, explorers hike...







# Highlights LES 2 ALPES



## For foodies

► **Le P'tit Polyte restaurant** (4-star hotel Chalet Mounier), is **the Isère region's highest MICHELIN starred establishment**, and run since this summer by chef Sébastien Lalanne, pastry chef Juan Leiro, and their kitchen team. **The P'tit Polyte's Michelin star has been renewed for 2023.** Since 1999, the history of the Michelin Guide has been intertwined with that of Chalet Mounier; 24 years of shared history that 9 chefs have helped to write, keeping their star shining bright.



► **At Yonder Café, healthy eating** is on Arthur's menu, inspired by discoveries from all 4 corners of the world.



► **Grain de Sel** serves French cooking that bubbles away for hours made from seasonal local produce, as well as the creamy chicken cordon bleu dish with a twist, as showcased on the France 3 Météo à la Carte TV programme!

► **Raisin d'Ours** is home to the smoked burger. Served in a homemade brioche bun, it is filled with a hand-prepared ground beef patty and made to order.

► **At Le Cours de la Vie in Venosc** you'll find Mathilde and Stephan serving refined, local, and authentic cuisine.



► **Douces Gourmandises in Venosc village** is run by Bruno, who was awarded the 'Meilleur Ouvrier de France' label. He serves fresh local produce on a terrace enjoying stunning views of the Vénéon Valley and the Aiguille de Venosc.

► **Bistrot des Lutins** (created in 1959), run by Louison (Loulou), is a meeting place for locals who rate the friendly atmosphere and quality food. It is also the place to go for homemade ice creams and Loutella spread!

► **Les Mauvais garçons** is a cosy venue for meat lovers. Expect generous servings and impeccable service!



**ASSOCIATION  
FRANÇAISE  
DES MAÎTRES  
RESTAURATEURS**

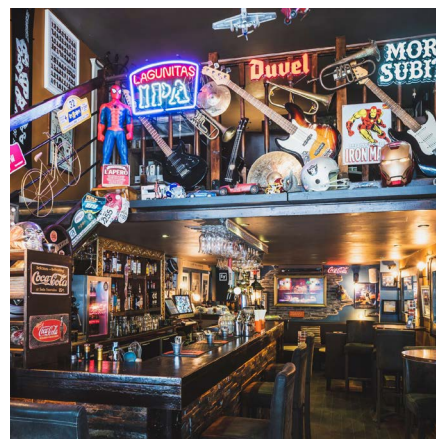
► **4 of Les 2 Alpes restaurants** have been awarded the Maître Restaurateur label: Chalet Mounier, Les Mélèzes, Diable au Cœur and Casa Nostra



## Where to go for a drink

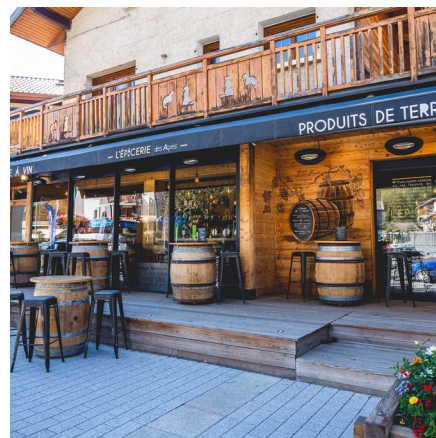
► **Chez Nous 2** is run by sisters Ophélie and Sophie. Their happy and generous nature extends to the platters of tapas and local produce from southwest France (where the sisters are from), as well as the homemade cocktails.

► **MOTOWN CAFÉ** is a lovely bar for sipping cocktails with homemade tapas (free) to the sound of MOTOWN soul music mixed with pop.



► **The Saloon** is a bar (and restaurant) that is one of a kind... with an open mic for musicians!

► **Épicerie des Alpes** is a delicatessen where you can enjoy quality wine with "local produce" platters, sitting comfortably around the wine barrels.



► **The Smithy's Tavern** is a huge wooden chalet that's home to a restaurant and a bar welcoming customers from all over the world, especially from the UK. It's a fantastic "So British!" place where you can discover artisanal beers and sample their famous homemade "Genepi fusion"!

► **Ginette** is Les 2 Alpes' trendy new venue and it's totally different to anywhere else in the resort. With its elegant, stylish, and colourful decor, and its cosy, welcoming atmosphere, enjoy delicious cocktails lovingly concocted by Jimmy, who runs this «so Frenchie-British» lounge!



► **BC7** is a cosy, instagrammable restaurant and bar where you can enjoy a cocktail with tapas and tasty pizzas.

► **Chamois Lodge** is the place to go for its bistro-style fine dining, as well as its array of cocktails and delicious platters around the fire pit.



## Other venues

► Relax and make the most of your holiday in one of our **top-quality Spas**: SPA Cinq Mondes at the Chalet Mounier hotel, SPA Reine de Saba at the Côte Brune hotel, SPA Physioski (physios and osteopaths) at the Chamois Lodge.



► **Head to Le Vieux Chalet and La Fromagerie des Alpes** (cheese aging on site) for local produce: cheese, dried sausage, traditional 'crozet' pasta, blueberry jam, honey, mountain liqueurs...



► **Café-Musée Chasal Lento** (access via free chairlift from Les 2 Alpes) is a fantastic "immersive" adventure through the history of our mountain village (Romans, peddlers, Chambon dam, the history of Les 2 Alpes) and an old-fashioned bistro where you can have a great time with locals and listen to their anecdotes at the bar!

► **Au Jardin de Lyna.** After 18 years without a florist, this is a true delight for the senses!



► **Les Petits Caprices d'Émilie** Paris is Les 2 Alpes' renowned chocolate shop/pâtisserie. Emilie abounds with creativity, adding a dash of extravagance to her sweet treats and delights, which for her are a work of art made for sharing!



► Yonder Café makes **the only coffee that's truly made in Les 2 Alpes**. Roasted at an altitude of 1,650 metres, as whole beans, or ground coffee, it comes from countries such as Guatemala, Ethiopia, Indonesia, and Peru. Arthur, who runs the place, makes every day an even better one with a lovely cup of homemade coffee!



► The **Génépi des Sommets** shop is home to the secrets of génépi liqueur making, following a recipe handed down from generation to generation, and made on site using traditional methods. Every

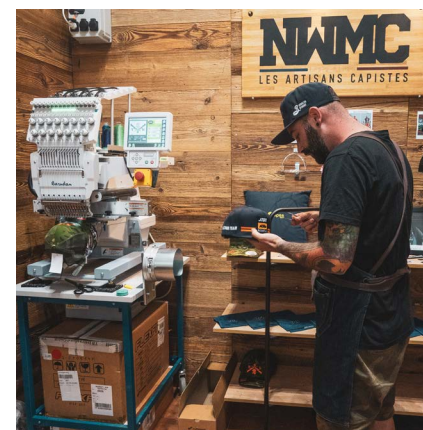
day, Cyril Jouvin and Sylvain Péguy show their customers the origins of the plant, how they turn it into their elixir, and how to bottle it, followed by a tasting of the finished product. An enriching and delicious experience!



► Beer is a very popular drink, and some have been inspired by its popularity to dream up their own creation. Ugo Mounier, manager of Le Diable au Coeur slopeside restaurant, created his own recipe for "**glacier beer**", and every year, he brews a new recipe.



► If you want to take home a unique holiday souvenir with you, how about a unique baseball cap that you won't find anywhere else! Florian Martin, known as dit Flo, is a cap artist/embroiderer who makes them on site in his shop: **NWMC** (Never Without My Cap)!



► Contemporary artist **Sophie Dode** loves the mountains, which she portrays on canvas... Let the colours, contrast, and light catch your eye!



► **Laetitia Ayral (known as Laët)** – located in the village of Mont de Lans, discover wood sanding and engraving, where old wooden items are given a new lease of life. The technique and beauty of the finished items are incredible!



► **Robert MENSAH known as Bobby**, has been a wood-sculptor in Venosc for 20 years. From useful objects to unique works of art, his contemporary-style creations draw upon both European and African inspirations. He favours local varieties of hardwood for their colour and grain. He exhibits in Europe, and his clients come from all over the world, including Australia and New Zealand.

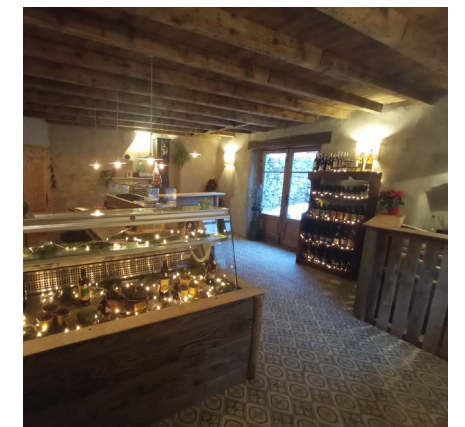


► **Simon Lavaud is a blacksmith and knifemaker in Venosc (La Forge du Vénéon)**: He has breathed new life into the Vénéon valley's forge, which is more than a hundred years old. Set in the heart of Venosc, it now belongs to Simon. He has reignited the traditional techniques to make quality artisan knives by hand! Knives are available to purchase from the workshop. 1 and 2-day knifemaking courses organised.

► **Trattoria Pasta Mia** is the Italian restaurant/deli to go to for a wide range of fresh pasta dishes prepared before your eyes, in true Italian style.



► **Venosc dairy cooperative**: goat's and sheep's milk cheese straight from the producer to the customer.







# WINTER EVENT 2023/2024

Subject to change and/or cancellation



**23<sup>rd</sup> oct. to 24<sup>th</sup> nov.**

## AVALANCHE BLASTER TRAINING

**5<sup>TH</sup> EDITION**

The National Association for the Study of Snow and Avalanches (ANENA) will be running four mountain avalanche blaster and delay charge blaster training sessions in Les 2 Alpes. Around one hundred avalanche blasters will be trained in Les 2 Alpes for the 5<sup>th</sup> consecutive year!

## 1<sup>st</sup> to 2<sup>nd</sup> december FIS SNOWBOARD CROSS WORLD CUP

**2<sup>ND</sup> EDITION**

Just like last year, Les 2 Alpes will be launching the 2023/2024 World Cup season with the FIS Snowboard Cross World Cup on the 1st and 2nd December (may be postponed to 3rd December subject to weather conditions). The events will take place in the official FFS and FIS Snowboard Cross area, between 3,400 metres and 3,200 metres (Les 2 Alpes Cross park). All the big names in Snowboard cross will be there, with the French team thrilled to be taking part on home turf in an area that they regularly train on.

**4 to 15<sup>th</sup> december**

## AVALANCHE RESCUE DOG HANDLER TRAINING

**18<sup>TH</sup> EDITION**

ANENA will be training avalanche rescue dog-handlers between 5th and 15<sup>th</sup> December 2023. Around twenty pairs will attend 88 hours of practical and theory lessons over 11 days: the rules and procedures of avalanche rescues, identifying different methods to reach the search zone, what equipment to pack, dog handling and practical exercises under real conditions on the terrain. At the end, participants will receive a government-recognised National Avalanche Dog Handling certificate.

**9<sup>th</sup> to 16<sup>th</sup> december**

## RISE FESTIVAL (GB)

**9<sup>TH</sup> EDITION**

6,000 British visitors will gather in Les 2 Alpes to enjoy an electro-music festival and the delights of the mountains. A week of skiing, snowsports and many different mountain experiences, including snowshoeing, e-mountain biking, dog sledding, yoga, spa sessions... Combined with an electro-music festival. The spirit of Christmas and festive lights will make the event truly magical!

**19/12, 26/12, 6/02,  
13/02, 20/02, 27/02**  
**MAGIC AVENUE**

Les 2 Alpes is truly magical at Christmas and during the February school holidays, with torchlit descents, firework displays, ski shows, shows at the Palais des Sports complex, hot chocolate and lively parades with music and illuminations, «Magic Avenue» (a colourful street parade of artists, giant puppets, magical characters on stilts along the resort's main road, organised by AFOZIC, in conjunction with the Tourist Office).

**19<sup>th</sup> to 20<sup>th</sup> january**  
**LES LUMIERES  
DE LA MUZELLE  
TRAIL RUNNING  
EVENT**

**11<sup>TH</sup> EDITION**

In 2022, Les 2 Alpes Trail association took over the organisation of the resort's «Night Snow Trail», which became «Les Lumières de la Muzelle». The race starts at altitude (on the Vallée Blanche sector at 2,100 metres) at sunset, to the light of headlamps, with the lights of Les 2 Alpes below. It's a true snow-white trail! In 2024, trailers will be able to pit themselves against a choice of routes, including a 10km (easy), a 21km (for regular trail runners), and an all-new 42km challenge on snow (2<sup>nd</sup> edition for Les 2 Alpes) reserved for very good trailers: the Maratrail on snow!

**13<sup>th</sup> april**  
**BLACK GARDEN  
PARTY (MTB)**

Every April, mountain bikers head to Les 2 Alpes' downhill trails to get a taste of things to come, including the iconic red Venosc run, and since last winter the all-new Black Garden double black elite run. On Saturday 13th April, Les 2 Alpes (in conjunction with the Commencal team, the Sata 2 Alpes bike patrols, and Adrien Loron, official Les 2 Alpes ambassador) organises a day of get togethers and descents to Venosc to kick start the spring/summer MTB season with the «Black Garden Party».

**20<sup>th</sup> april**  
**LA PATROLETTE**

**4<sup>TH</sup> EDITION**

Ski patrollers (Association of Oisans region ski patrollers /APSO) will be showcasing their profession and challenging each other over a climbing race, timed avalanche rescue and sled boardercross. Expect fun, laughter, and challenges at this extraordinary get-together!

**20<sup>th</sup> april**  
**BEEF ROAST  
RAIL JAM**  
**5<sup>TH</sup> EDITION**

A friendly freestyle contest where French and British teams of 3 competitors go head-to-head in a Jam session on Les 2 Alpes' snowpark (Toura – 2,600 metres).

Les 2 Alpes co-hosts weeks of snow, celebrations & competitions with European tour operators!

**2-9 Dec / POWDERWEEK  
(Germany)**

Around 500 German visitors enjoy a week of snowsports in collaboration with tour operator Snowtrex.

**13-27 Jan / ROYAL NAVY WINTER  
SPORTS ASSOCIATION ALPINE  
CHAMPIONSHIPS (GB)**

around 500 people every week

**20-27 Jan / SNOWATTACK  
(Holland)**

2,500 clients embark on a snow week with Festival Travel Company.

**3-9 March / SNOWZONE  
(Germany)**

a week of skiing with tour operator E&P Reisen

**9-16 March / UNICHAMP  
(Germany)**

intra-university ski competitions with tour operator E&P Reisen

**16-23 March / SNOWSHOW  
(Poland)**

A week of skiing and Polish celebrations (1,200 people).

**23-30 March / SNOWFEST  
(Romania)**

3,000 Romanian customers gather in Les 2 Alpes (a week of music and snowsports) with Scfara Tours.

**Les 2 Alpes Ski Club  
competitions**

**13<sup>th</sup> to 14<sup>th</sup> January  
TOUT SCHUSS CUP**

8<sup>th</sup> edition  
Speed skiing competitions for kids (under 12s)

**16<sup>th</sup> March  
CHOUCAS KIDS TROPHY**

FFS ski (giant) and snowboard (Boardercross) competitions for 7 to 11-year-olds.

**13<sup>th</sup> to 14<sup>th</sup> April  
MICRO KIDS**

7<sup>th</sup> edition  
Les 2 Alpes French Ski School and Les 2 Alpes Ski Club will be hosting a French snowboarding competition (giant slalom on a boarder) for 5 – 11-year-olds ('Super Microbes', 'Microbes' and 'Poussins'). The champions of tomorrow could be there...





## Getting to LES 2 ALPES



### BY TRAIN

Arriving at Grenoble train station  
(1hr 15mins by car or taxi and 1hr 45mins by bus)



### BY BUS

#### FROM LYON AIRPORT

FLIXBUS or BLABLACAR shuttlebus (1hr),  
then CARS REGION or TRANSALTITUDE  
(1hr 45mins) from Grenoble to the resort

#### FROM GRENOBLE TRAIN STATION

CARS REGION shuttlebus and TRANSALTITUDE  
(1hr 45mins)

#### NEW EASY BOOKING AND PURCHASE:

[go2alpes.com](http://go2alpes.com) (start in November)



### BY AIR

**GRENOBLE ALPES ISÈRE** (1hr 30mins),

**LYON SAINT EXUPÉRY** (2hrs)

**GENEVA AIRPORT** (2hrs 30mins)





## CONTACT PRESS DEPARTMENT

### Hélène HOSPITAL

Tél : +33 (0)4 76 79 54 45

Mobile : +33 (0)6 75 20 92 05

helenahospital@les2alpes.com

**PRESS AREA** : at [www.les2alpes.com](http://www.les2alpes.com) (press packs, press releases...)

**FACEBOOK** : Hélène Presse Deux Alpes

**TWITTER** : @Helena\_Hospital

**PHOTOS & VIDEOS** : Please contact us if needed /

Our photographer: @Les 2 Alpes\_Pyrène Duffau & Our videographer:

@Les 2 Alpes\_Alexandre Gallego (And Les 2 Alpes YouTube Channel:

<https://www.youtube.com/channel/UCgCGap8Zgt2cet7IIElbPsA>)

### LES 2 ALPES TOURIST OFFICE CONTACT

Tél : +33 (0)4 76 79 22 00

[www.les2alpes.com](http://www.les2alpes.com) - [info@les2alpes.com](mailto:info@les2alpes.com)

Social media @2ALPES

HASHTAGS : #Les2Alpes #HomeOfRide

### 2 ALPES RÉSERVATION CONTACT

2 ALPES RESERVATION has 700 properties on its books,  
plus excellent contacts with private landlords, around twenty hotels,  
and all of the resort's estate agencies.

2 ALPES RESERVATION is now 100% digital,  
with a new online Chatbot to answer all your questions

@: [reservation@les2alpes.com](mailto:reservation@les2alpes.com) / [www.les2alpes.com](http://www.les2alpes.com)